



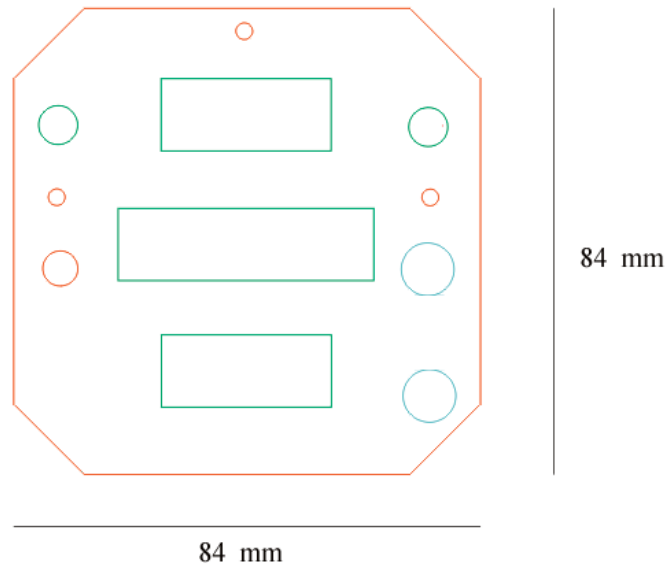
Cronómetro Airbus A320
Airbus A320 Cronometer

Datos técnicos:

Technical data:

Las medidas del hardware (ancho x alto x profundidad) son: 84 x 84 x 60 cm.

The measurements of the hardware (width x height x depth) are: 84 x 84 x 60 cm.

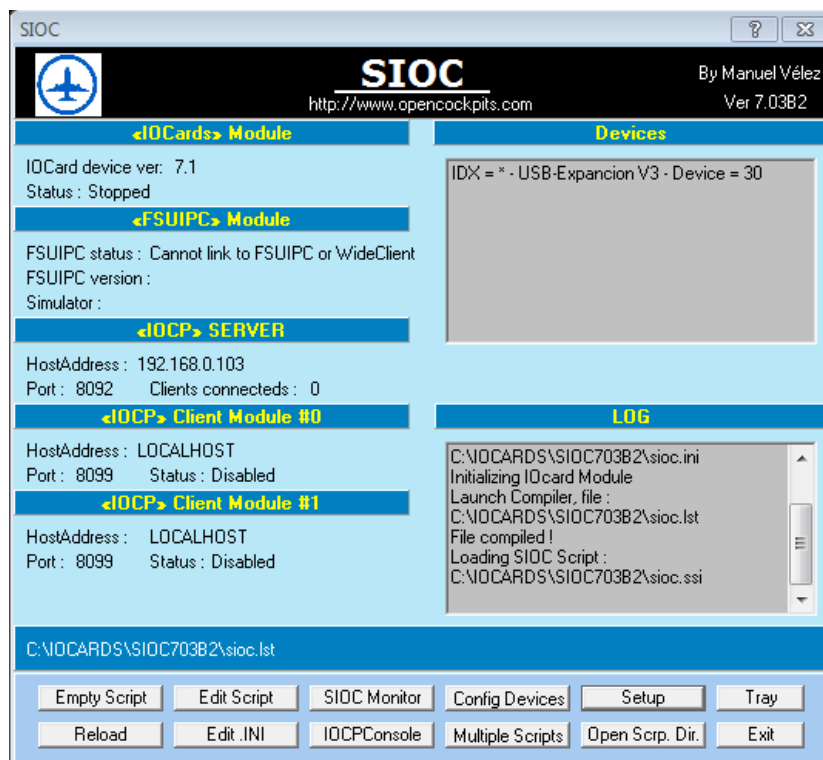


Datos de Configuración:

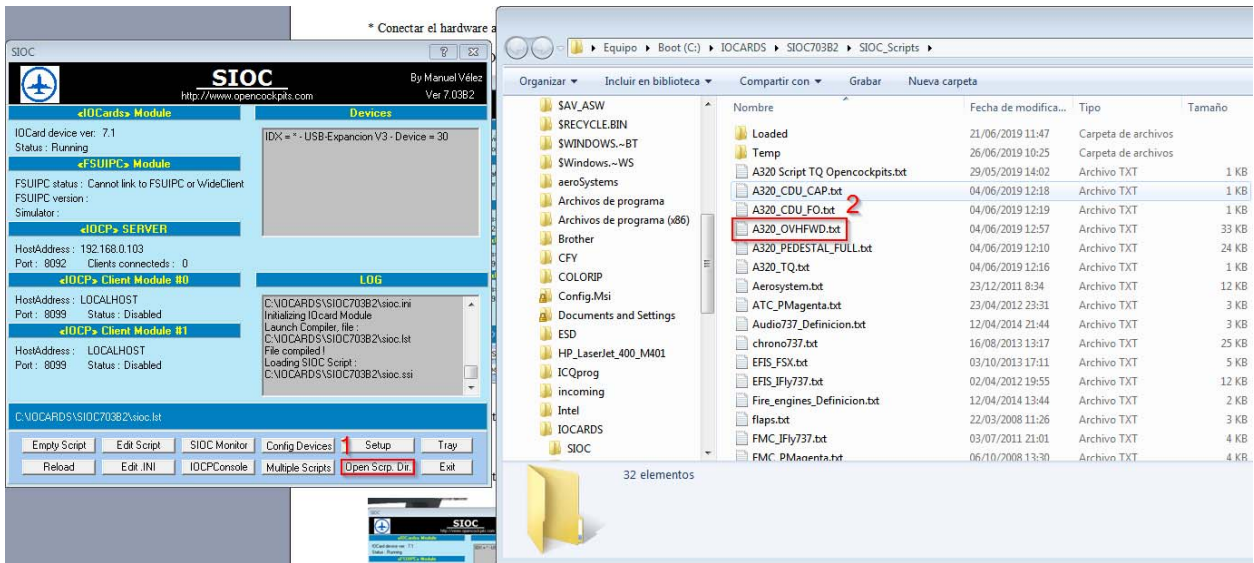
Configuration data:

* Conectar el hardware a través de los dos cables USB al puerto correspondiente del ordenador.
Connect the hardware through the two USB cables to the computer.

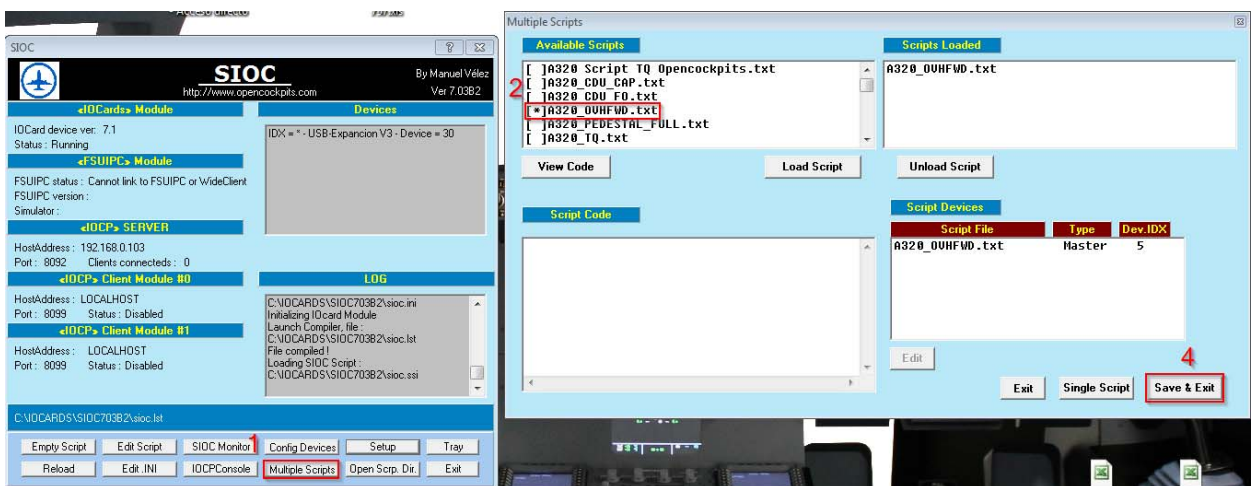
* Ejecutar o instalar SIOC (https://www.opencockpits.com/catalog/info/information.php?info_id=45&language=es)
Install or exec SIOC software.



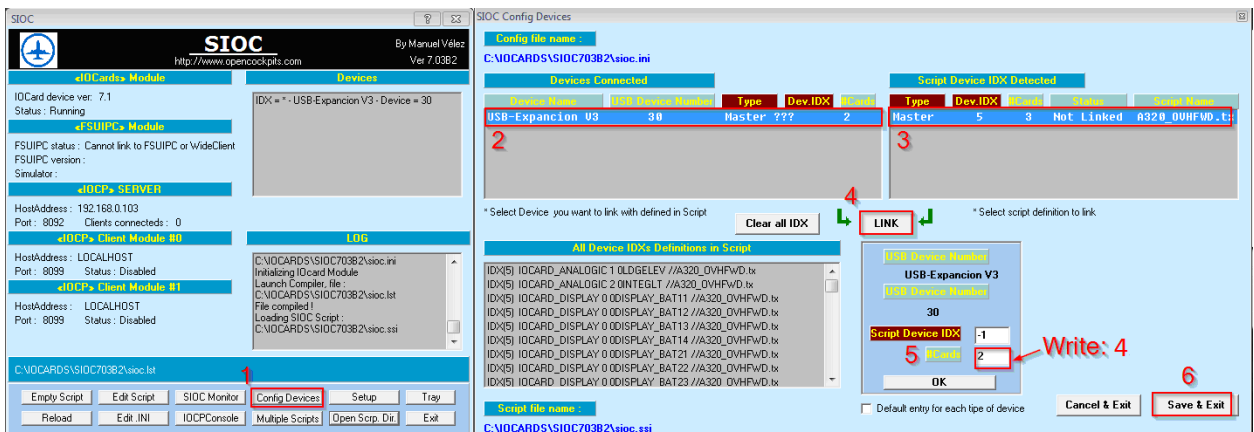
* Copiar el código script en el directorio de scripts de SIOC.
Copy the script code in the SIOC script directory.



* Cargar el código script en SIOC.
Load the script code in SIOC.



* Configurar el dispositivo.
Configure the device.



* Configurar el hardware en su Addons favorita.
Configure the hardware in your favorite Addons.

Nota: En las imagenes aparece la configuración del OVH FWD. En el caso del crono, los pasos a seguir son los mismos, únicamente deberemos agregar el script correspondiente al hardware.

Note: The OVH FWD configuration appears in the images. In the case of the chrono, the steps to follow are the same, we only have to add the corresponding script to the hardware.

Precaución:

Caution:

* Montar y fijar adecuadamente el hardware. Seguir los siguientes pasos:

Mount and fix the hardware properly. Follow the next steps:

Fijar la carátula en el MIP
Fix the cover in the MIP

Fijar la parte trasera del módulo.
Fix the back side of the module.

Colocar los botones.
Place the buttons.



Declaración de entradas y salidas:

I/O declaration:

//CHRONO INPUTS

```
VAR 6001, NAME RST, STATIC, LINK IOCARD_SW, DEVICE 6, INPUT 12
VAR 6002, NAME CLK_CHR, STATIC, LINK IOCARD_SW, DEVICE 6, INPUT 0
VAR 6003, NAME CLK_DATE, STATIC, LINK IOCARD_ENCODER, DEVICE 6, INPUT 10, Aceleration 4, Type 2
VAR 6004, NAME DATE_PUSH, STATIC, LINK IOCARD_SW, DEVICE 6, INPUT 9
VAR 6005, NAME GPS_IN, STATIC, LINK IOCARD_SW, DEVICE 6, INPUT 6
VAR 6006, NAME GPS_SET, STATIC, LINK IOCARD_SW, DEVICE 6, INPUT 7
VAR 6008, NAME RUN_STP, STATIC, LINK IOCARD_SW, DEVICE 6, INPUT 1
VAR 6009, NAME RUN_RST, STATIC, LINK IOCARD_SW, DEVICE 6, INPUT 2
```

//CHRONO OUTPUTS

```
VAR 6011, name CL_CHR, STATIC, Link IOCARD_DISPLAY, Device 6, Digit 0, Numbers 4
VAR 6012, name CL_UTC, STATIC, Link IOCARD_DISPLAY, Device 6, Digit 4, Numbers 6
VAR 6013, name CL_ET, STATIC, Link IOCARD_DISPLAY, Device 6, Digit 10, Numbers 4
VAR 6014, NAME DOT_CHR, STATIC, LINK IOCARD_OUT, DEVICE 6, OUTPUT 20
VAR 6015, NAME DOT_UTC1, STATIC, LINK IOCARD_OUT, DEVICE 6, OUTPUT 21
VAR 6016, NAME DOT_UTC2, STATIC, LINK IOCARD_OUT, DEVICE 6, OUTPUT 22
VAR 6017, NAME DOT_ET, STATIC, LINK IOCARD_OUT, DEVICE 6, OUTPUT 23
```