



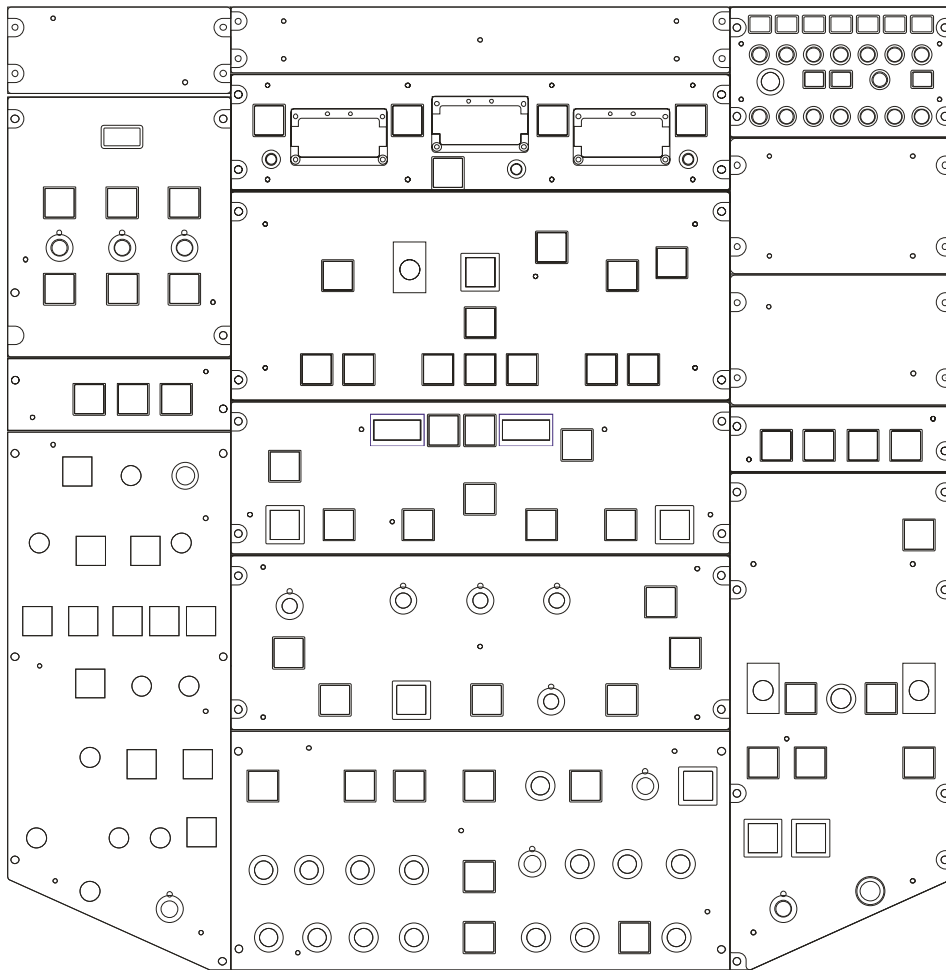
Overhead Airbus A320
Airbus A320 Overhead

Datos técnicos:

Technical data:

Las medidas del hardware (ancho x alto x profundidad) son: 62,5 x 61,9 x 11 cm.

The measurements of the hardware (width x height x depth) are: 62,5 x 61,9 x 11 cm.



62,5 cm

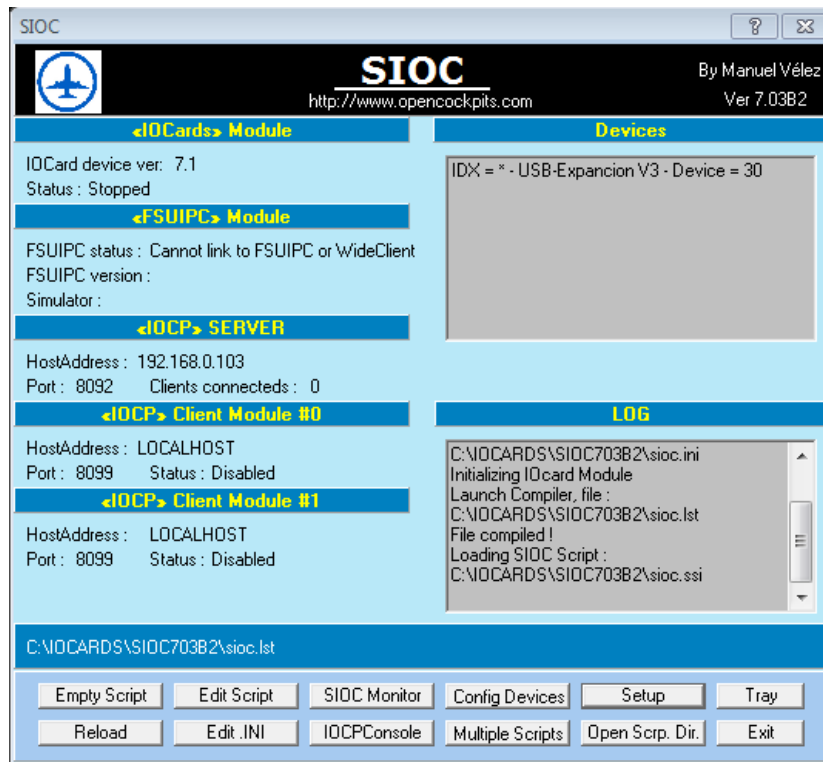
61,9 cm

Datos de Configuración:

Configuration data:

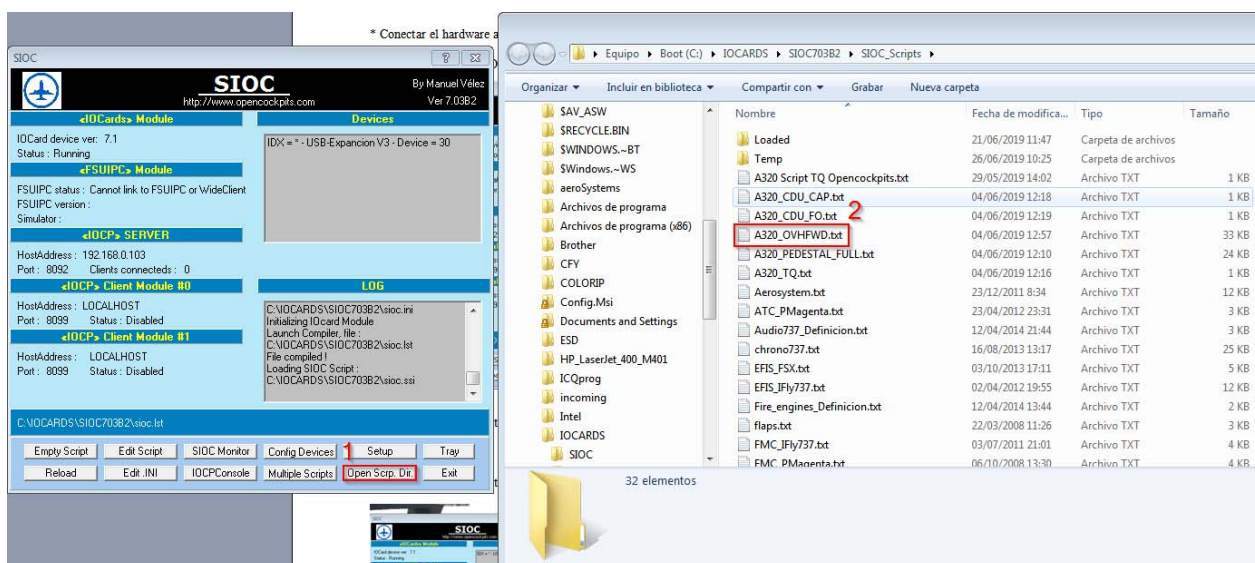
* Conectar el hardware a través de los dos cables USB al puerto correspondiente del ordenador.
Connect the hardware through the two USB cables to the computer.

* Ejecutar o instalar SIOC (https://www.opencockpits.com/catalog/info/information.php?info_id=45&language=es)
Install or exec SIOC software.

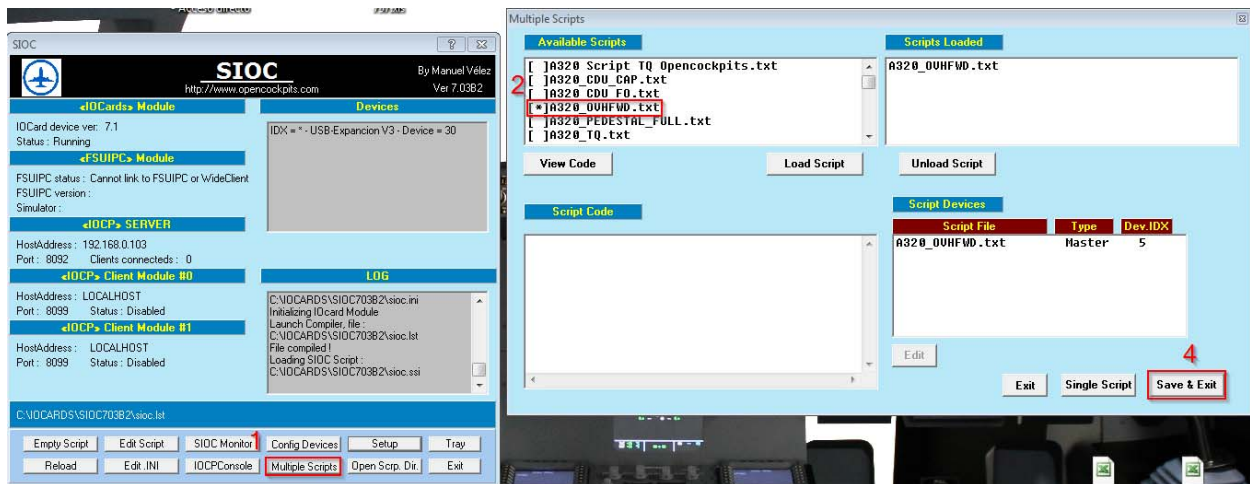


* Copiar el código script en el directorio de scripts de SIOC.

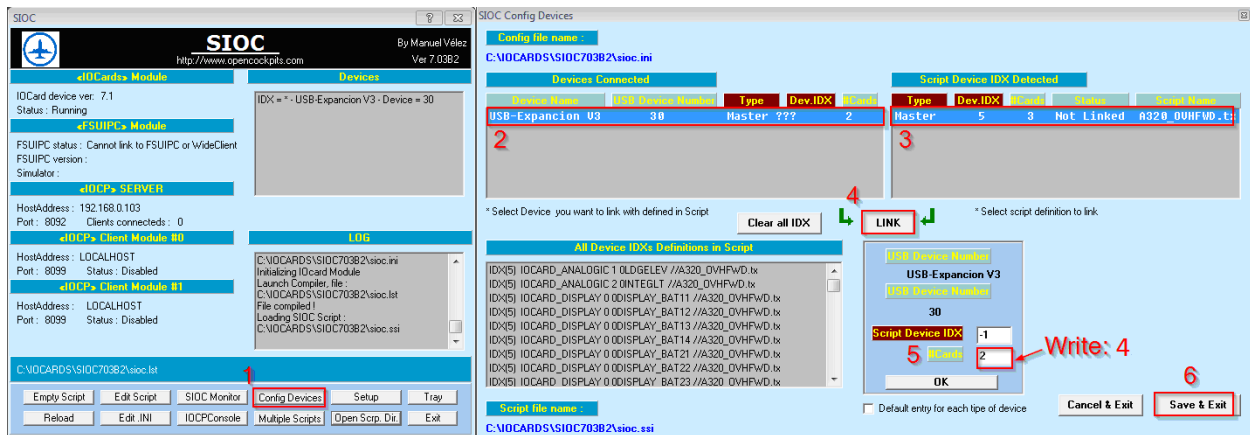
Copy the script code in the SIOC script directory.



* Cargar el código script en SIOC.
Load the script code in SIOC.



* Configurar el dispositivo.
Configure the device.



* Configurar el hardware en su Addons favorita.
Configure the hardware in your favorite Addons.

Precaución:

Caution:

* Montar y fijar adecuadamente el hardware.

Mount and fix the hardware properly.



* Hardware comprobado para funcionar a la tensión de entrada de 5V (Master Card) y 12V (ledstrip)

** Hardware tested to operate at the voltage of 5V (Master Card) and 12V (ledstrip)*

Declaración de entradas y salidas:

I/O declaration:

```
//-----  
//-Switch type Korry [OUT]: -  
//-----  
//  
//ENG:  
VAR 0001, NAME MANSTART1_ON, STATIC, LINK IOCARD_OUT, DEVICE X, OUTPUT 211  
VAR 0002, NAME MANSTART1_PP, STATIC, LINK IOCARD_OUT, DEVICE X, OUTPUT 212  
VAR 0003, NAME MANSTART2_ON, STATIC, LINK IOCARD_OUT, DEVICE X, OUTPUT 213  
VAR 0004, NAME MANSTART2_PP, STATIC, LINK IOCARD_OUT, DEVICE X, OUTPUT 214  
//VENTILATION:  
VAR 0005, NAME BLOWER_OVRD, STATIC, LINK IOCARD_OUT, DEVICE X, OUTPUT 223  
VAR 0006, NAME BLOWER_FAULT, STATIC, LINK IOCARD_OUT, DEVICE X, OUTPUT 224  
VAR 0007, NAME EXTRACT_OVRD, STATIC, LINK IOCARD_OUT, DEVICE X, OUTPUT 225  
VAR 0008, NAME EXTRACT_FAULT, STATIC, LINK IOCARD_OUT, DEVICE X, OUTPUT 226  
VAR 0009, NAME CABFANS_OFF, STATIC, LINK IOCARD_OUT, DEVICE X, OUTPUT 113  
VAR 0010, NAME CABFANS_PP, STATIC, LINK IOCARD_OUT, DEVICE X, OUTPUT 114  
//CARGO SMOKE:  
VAR 0011, NAME FWD_DISCH, STATIC, LINK IOCARD_OUT, DEVICE X, OUTPUT 235  
VAR 0012, NAME FWD_SMOKE, STATIC, LINK IOCARD_OUT, DEVICE X, OUTPUT 236  
VAR 0013, NAME AFT_DISCH, STATIC, LINK IOCARD_OUT, DEVICE X, OUTPUT 237  
VAR 0014, NAME AFT_SMOKE, STATIC, LINK IOCARD_OUT, DEVICE X, OUTPUT 238  
//CARGO VENT:  
VAR 0015, NAME IVALVE_OFF, STATIC, LINK IOCARD_OUT, DEVICE X, OUTPUT 207  
VAR 0016, NAME IVALVE_FAULT, STATIC, LINK IOCARD_OUT, DEVICE X, OUTPUT 208  
//FLT CTL:  
VAR 0017, NAME ELAC2_OFF, STATIC, LINK IOCARD_OUT, DEVICE X, OUTPUT 219  
VAR 0018, NAME ELAC2_AULT, STATIC, LINK IOCARD_OUT, DEVICE X, OUTPUT 220  
VAR 0019, NAME SEC2_OFF, STATIC, LINK IOCARD_OUT, DEVICE X, OUTPUT 221  
VAR 0020, NAME SEC2_AULT, STATIC, LINK IOCARD_OUT, DEVICE X, OUTPUT 222  
VAR 0021, NAME SEC3_OFF, STATIC, LINK IOCARD_OUT, DEVICE X, OUTPUT 231  
VAR 0022, NAME SEC3_AULT, STATIC, LINK IOCARD_OUT, DEVICE X, OUTPUT 232  
VAR 0023, NAME FAC2_OFF, STATIC, LINK IOCARD_OUT, DEVICE X, OUTPUT 233  
VAR 0024, NAME FAC2_AULT, STATIC, LINK IOCARD_OUT, DEVICE X, OUTPUT 234  
//SIGNS:  
VAR 0025, NAME SIGNS_OFF, STATIC, LINK IOCARD_OUT, DEVICE X, OUTPUT 111  
VAR 0026, NAME SIGNS_PP, STATIC, LINK IOCARD_OUT, DEVICE X, OUTPUT 112
```

```

//APU:
VAR 0027, NAME MASTERSW_ON, STATIC, LINK IOCARD_OUT, DEVICE X, OUTPUT 227
VAR 0028, NAME MASTERSW_FAULT, STATIC, LINK IOCARD_OUT, DEVICE X, OUTPUT 228
VAR 0029, NAME START_ON, STATIC, LINK IOCARD_OUT, DEVICE X, OUTPUT 229
VAR 0030, NAME START_AVAIL, STATIC, LINK IOCARD_OUT, DEVICE X, OUTPUT 230
//PROBE-WINDOW HEAT:
VAR 0031, NAME HEAT_ON, STATIC, LINK IOCARD_OUT, DEVICE X, OUTPUT 217
VAR 0032, NAME HEAT_PP, STATIC, LINK IOCARD_OUT, DEVICE X, OUTPUT 218
//CABIN PRESS:
VAR 0033, NAME MODESEL_MAN, STATIC, LINK IOCARD_OUT, DEVICE X, OUTPUT 203
VAR 0034, NAME MODESEL_FAULT, STATIC, LINK IOCARD_OUT, DEVICE X, OUTPUT 204
VAR 0035, NAME DITCHING_ON, STATIC, LINK IOCARD_OUT, DEVICE X, OUTPUT 205
VAR 0036, NAME DITCHING_PP, STATIC, LINK IOCARD_OUT, DEVICE X, OUTPUT 206
//ANTI-ICE:
VAR 0037, NAME AIWING_ON, STATIC, LINK IOCARD_OUT, DEVICE X, OUTPUT 239
VAR 0038, NAME AIWING_FAULT, STATIC, LINK IOCARD_OUT, DEVICE X, OUTPUT 240
VAR 0039, NAME AIENG1_ON, STATIC, LINK IOCARD_OUT, DEVICE X, OUTPUT 241
VAR 0040, NAME AIENG1_FAULT, STATIC, LINK IOCARD_OUT, DEVICE X, OUTPUT 242
VAR 0041, NAME AIENG2_ON, STATIC, LINK IOCARD_OUT, DEVICE X, OUTPUT 215
VAR 0042, NAME AIENG2_FAULT, STATIC, LINK IOCARD_OUT, DEVICE X, OUTPUT 216
//AIR COND:
VAR 0043, NAME PACK1_OFF, STATIC, LINK IOCARD_OUT, DEVICE X, OUTPUT 175
VAR 0044, NAME PACK1_FAULT, STATIC, LINK IOCARD_OUT, DEVICE X, OUTPUT 176
VAR 0045, NAME ENG1BLEED_OFF, STATIC, LINK IOCARD_OUT, DEVICE X, OUTPUT 177
VAR 0046, NAME ENG1BLEED_FAULT, STATIC, LINK IOCARD_OUT, DEVICE X, OUTPUT 178
VAR 0047, NAME RAMAIR_ON, STATIC, LINK IOCARD_OUT, DEVICE X, OUTPUT 163
VAR 0048, NAME RAMAIR_PP, STATIC, LINK IOCARD_OUT, DEVICE X, OUTPUT 164
VAR 0049, NAME APUBLEED_ON, STATIC, LINK IOCARD_OUT, DEVICE X, OUTPUT 165
VAR 0050, NAME APUBLEED_FAULT, STATIC, LINK IOCARD_OUT, DEVICE X, OUTPUT 166
VAR 0051, NAME ENG2BLEED_OFF, STATIC, LINK IOCARD_OUT, DEVICE X, OUTPUT 151
VAR 0052, NAME ENG2BLEED_FAULT, STATIC, LINK IOCARD_OUT, DEVICE X, OUTPUT 152
VAR 0053, NAME PACK2_OFF, STATIC, LINK IOCARD_OUT, DEVICE X, OUTPUT 153
VAR 0054, NAME PACK2_FAULT, STATIC, LINK IOCARD_OUT, DEVICE X, OUTPUT 154
VAR 0055, NAME HOTAIR_OFF, STATIC, LINK IOCARD_OUT, DEVICE X, OUTPUT 139
VAR 0056, NAME HOTAIR_FAULT, STATIC, LINK IOCARD_OUT, DEVICE X, OUTPUT 140
//ELEC:
VAR 0057, NAME GALLEY_OFF, STATIC, LINK IOCARD_OUT, DEVICE X, OUTPUT 161
VAR 0058, NAME GALLEY_FAULT, STATIC, LINK IOCARD_OUT, DEVICE X, OUTPUT 162
VAR 0059, NAME IDG_PP, STATIC, LINK IOCARD_OUT, DEVICE X, OUTPUT 159
VAR 0060, NAME IDG_FAULT, STATIC, LINK IOCARD_OUT, DEVICE X, OUTPUT 160
VAR 0061, NAME GEN1_OFF, STATIC, LINK IOCARD_OUT, DEVICE X, OUTPUT 171
VAR 0062, NAME GEN1_FAULT, STATIC, LINK IOCARD_OUT, DEVICE X, OUTPUT 172
VAR 0063, NAME APUGEN_OFF, STATIC, LINK IOCARD_OUT, DEVICE X, OUTPUT 173
VAR 0064, NAME APUGEN_FAULT, STATIC, LINK IOCARD_OUT, DEVICE X, OUTPUT 174
VAR 0065, NAME BUSTIE_OFF, STATIC, LINK IOCARD_OUT, DEVICE X, OUTPUT 155
VAR 0066, NAME BUSTIE_PP, STATIC, LINK IOCARD_OUT, DEVICE X, OUTPUT 156
VAR 0067, NAME EXTPWR_ON, STATIC, LINK IOCARD_OUT, DEVICE X, OUTPUT 157
VAR 0068, NAME EXTPWR_AVAIL, STATIC, LINK IOCARD_OUT, DEVICE X, OUTPUT 158
VAR 0069, NAME GEN2_OFF, STATIC, LINK IOCARD_OUT, DEVICE X, OUTPUT 169
VAR 0070, NAME GEN2_FAULT, STATIC, LINK IOCARD_OUT, DEVICE X, OUTPUT 170
VAR 0071, NAME IDG2_FAULT, STATIC, LINK IOCARD_OUT, DEVICE X, OUTPUT 142
VAR 0072, NAME IDG2_PP, STATIC, LINK IOCARD_OUT, DEVICE X, OUTPUT 141
VAR 0073, NAME BAT1_OFF, STATIC, LINK IOCARD_OUT, DEVICE X, OUTPUT 143
VAR 0074, NAME BAT1_FAULT, STATIC, LINK IOCARD_OUT, DEVICE X, OUTPUT 144
VAR 0075, NAME BAT2_OFF, STATIC, LINK IOCARD_OUT, DEVICE X, OUTPUT 145
VAR 0076, NAME BAT2_FAULT, STATIC, LINK IOCARD_OUT, DEVICE X, OUTPUT 146
VAR 0077, NAME FEED_ALTN, STATIC, LINK IOCARD_OUT, DEVICE X, OUTPUT 167
VAR 0078, NAME FEED_OFF, STATIC, LINK IOCARD_OUT, DEVICE X, OUTPUT 168
//FUEL:
VAR 0079, NAME LTKPMP1_OFF, STATIC, LINK IOCARD_OUT, DEVICE X, OUTPUT 43
VAR 0080, NAME LTKPMP1_FAULT, STATIC, LINK IOCARD_OUT, DEVICE X, OUTPUT 44
VAR 0081, NAME LTKPMP2_OFF, STATIC, LINK IOCARD_OUT, DEVICE X, OUTPUT 45
VAR 0082, NAME LTKPMP2_FAULT, STATIC, LINK IOCARD_OUT, DEVICE X, OUTPUT 46
VAR 0083, NAME RTKPMP1_OFF, STATIC, LINK IOCARD_OUT, DEVICE X, OUTPUT 147
VAR 0084, NAME RTKPMP1_FAULT, STATIC, LINK IOCARD_OUT, DEVICE X, OUTPUT 148
VAR 0085, NAME RTKPMP2_OFF, STATIC, LINK IOCARD_OUT, DEVICE X, OUTPUT 149
VAR 0086, NAME RTKPMP2_FAULT, STATIC, LINK IOCARD_OUT, DEVICE X, OUTPUT 150
VAR 0087, NAME XFEED_ON, STATIC, LINK IOCARD_OUT, DEVICE X, OUTPUT 19
VAR 0088, NAME XFEED_OPEN, STATIC, LINK IOCARD_OUT, DEVICE X, OUTPUT 20
VAR 0089, NAME CTRTKPMP1_OFF, STATIC, LINK IOCARD_OUT, DEVICE X, OUTPUT 31
VAR 0090, NAME CTRTKPMP1_FAULT, STATIC, LINK IOCARD_OUT, DEVICE X, OUTPUT 32
VAR 0091, NAME CTRTKPMP2_OFF, STATIC, LINK IOCARD_OUT, DEVICE X, OUTPUT 21
VAR 0092, NAME CTRTKPMP2_FAULT, STATIC, LINK IOCARD_OUT, DEVICE X, OUTPUT 22
VAR 0093, NAME MODESELTK_MAN, STATIC, LINK IOCARD_OUT, DEVICE X, OUTPUT 33
VAR 0094, NAME MODESELTK_FAULT, STATIC, LINK IOCARD_OUT, DEVICE X, OUTPUT 34

```

```

//HYD:
VAR 0095, NAME ENG1PUMP_OFF, STATIC, LINK IOCARD_OUT, DEVICE X, OUTPUT 39
VAR 0096, NAME ENG1PUMP_FAULT, STATIC, LINK IOCARD_OUT, DEVICE X, OUTPUT 40
VAR 0097, NAME ELEC1PUMP_OFF, STATIC, LINK IOCARD_OUT, DEVICE X, OUTPUT 41
VAR 0098, NAME ELEC1PUMP_FAULT, STATIC, LINK IOCARD_OUT, DEVICE X, OUTPUT 42
VAR 0099, NAME PTU_OFF, STATIC, LINK IOCARD_OUT, DEVICE X, OUTPUT 27
VAR 0100, NAME PTU_FAULT, STATIC, LINK IOCARD_OUT, DEVICE X, OUTPUT 28
VAR 0101, NAME ENG2PUMP_OFF, STATIC, LINK IOCARD_OUT, DEVICE X, OUTPUT 29
VAR 0102, NAME ENG2PUMP_FAULT, STATIC, LINK IOCARD_OUT, DEVICE X, OUTPUT 30
VAR 0103, NAME ELEC2PUMP_OFF, STATIC, LINK IOCARD_OUT, DEVICE X, OUTPUT 17
VAR 0104, NAME ELEC2PUMP_FAULT, STATIC, LINK IOCARD_OUT, DEVICE X, OUTPUT 18
//CALLS:
VAR 0105, NAME EMER_ON, STATIC, LINK IOCARD_OUT, DEVICE X, OUTPUT 35
VAR 0106, NAME EMER_CALL, STATIC, LINK IOCARD_OUT, DEVICE X, OUTPUT 36
//OXYGEN:
VAR 0107, NAME PASSENGER_ON, STATIC, LINK IOCARD_OUT, DEVICE X, OUTPUT 49
VAR 0108, NAME PASSENGER_SYS, STATIC, LINK IOCARD_OUT, DEVICE X, OUTPUT 50
VAR 0109, NAME CREW_OFF, STATIC, LINK IOCARD_OUT, DEVICE X, OUTPUT 37
VAR 0110, NAME CREW_PP, STATIC, LINK IOCARD_OUT, DEVICE X, OUTPUT 38
//RCDR:
VAR 0111, NAME GND_ON, STATIC, LINK IOCARD_OUT, DEVICE X, OUTPUT 47
VAR 0112, NAME GND_PP, STATIC, LINK IOCARD_OUT, DEVICE X, OUTPUT 48
//GPWS:
VAR 0113, NAME TERR_OFF, STATIC, LINK IOCARD_OUT, DEVICE X, OUTPUT 83
VAR 0114, NAME TERR_FAULT, STATIC, LINK IOCARD_OUT, DEVICE X, OUTPUT 84
VAR 0115, NAME SYS_OFF, STATIC, LINK IOCARD_OUT, DEVICE X, OUTPUT 95
VAR 0116, NAME SYS_FAULT, STATIC, LINK IOCARD_OUT, DEVICE X, OUTPUT 96
VAR 0117, NAME GSMODE_OFF, STATIC, LINK IOCARD_OUT, DEVICE X, OUTPUT 97
VAR 0118, NAME GSMODE_PP, STATIC, LINK IOCARD_OUT, DEVICE X, OUTPUT 98
VAR 0119, NAME FLAPMODE_OFF, STATIC, LINK IOCARD_OUT, DEVICE X, OUTPUT 107
VAR 0120, NAME FLAPMODE_PP, STATIC, LINK IOCARD_OUT, DEVICE X, OUTPUT 108
VAR 0121, NAME LDGMODE_OFF, STATIC, LINK IOCARD_OUT, DEVICE X, OUTPUT 109
VAR 0122, NAME LDGMODE_PP, STATIC, LINK IOCARD_OUT, DEVICE X, OUTPUT 110
//EMER ELEC PWR:
VAR 0123, NAME LINE_OFF, STATIC, LINK IOCARD_OUT, DEVICE X, OUTPUT 85
VAR 0124, NAME LINE_SMOKE, STATIC, LINK IOCARD_OUT, DEVICE X, OUTPUT 86
VAR 0125, NAME EMERGEN_PP, STATIC, LINK IOCARD_OUT, DEVICE X, OUTPUT 81
VAR 0126, NAME EMERGEN_FAULT, STATIC, LINK IOCARD_OUT, DEVICE X, OUTPUT 82
//EVAC:
VAR 0127, NAME COMMAND_ON, STATIC, LINK IOCARD_OUT, DEVICE X, OUTPUT 79
VAR 0128, NAME COMMAND_EVAC, STATIC, LINK IOCARD_OUT, DEVICE X, OUTPUT 80
//FLT CTL:
VAR 0129, NAME ELAC1_OFF, STATIC, LINK IOCARD_OUT, DEVICE X, OUTPUT 91
VAR 0130, NAME ELAC1_FAULT, STATIC, LINK IOCARD_OUT, DEVICE X, OUTPUT 92
VAR 0131, NAME SEC1_OFF, STATIC, LINK IOCARD_OUT, DEVICE X, OUTPUT 93
VAR 0132, NAME SEC1_FAULT, STATIC, LINK IOCARD_OUT, DEVICE X, OUTPUT 94
VAR 0133, NAME FAC1_OFF, STATIC, LINK IOCARD_OUT, DEVICE X, OUTPUT 103
VAR 0134, NAME FAC1_FAULT, STATIC, LINK IOCARD_OUT, DEVICE X, OUTPUT 104
//ADIRS:
VAR 0135, NAME ADR1_OFF, STATIC, LINK IOCARD_OUT, DEVICE X, OUTPUT 75
VAR 0136, NAME ADR1_FAULT, STATIC, LINK IOCARD_OUT, DEVICE X, OUTPUT 76
VAR 0137, NAME ADR3_OFF, STATIC, LINK IOCARD_OUT, DEVICE X, OUTPUT 77
VAR 0138, NAME ADR3_FAULT, STATIC, LINK IOCARD_OUT, DEVICE X, OUTPUT 78
VAR 0139, NAME ADR2_OFF, STATIC, LINK IOCARD_OUT, DEVICE X, OUTPUT 105
VAR 0140, NAME ADR2_FAULT, STATIC, LINK IOCARD_OUT, DEVICE X, OUTPUT 106

VAR 0141, NAME IR1_ALIGN, STATIC, LINK IOCARD_OUT, DEVICE X, OUTPUT 99
VAR 0142, NAME IR1_FAULT, STATIC, LINK IOCARD_OUT, DEVICE X, OUTPUT 100

VAR 0143, NAME IR3_ALIGN, STATIC, LINK IOCARD_OUT, DEVICE X, OUTPUT 87
VAR 0144, NAME IR3_FAULT, STATIC, LINK IOCARD_OUT, DEVICE X, OUTPUT 88

VAR 0145, NAME IR2_ALIGN, STATIC, LINK IOCARD_OUT, DEVICE X, OUTPUT 89
VAR 0146, NAME IR2_FAULT, STATIC, LINK IOCARD_OUT, DEVICE X, OUTPUT 90

//FIRE:
VAR 1147, NAME E1AGNT1_DISCH, STATIC, LINK IOCARD_OUT, DEVICE X, OUTPUT 23
VAR 1148, NAME E1AGNT1_SQUIB, STATIC, LINK IOCARD_OUT, DEVICE X, OUTPUT 24
VAR 1149, NAME E1AGNT2_DISCH, STATIC, LINK IOCARD_OUT, DEVICE X, OUTPUT 25
VAR 1150, NAME E1AGNT2_SQUIB, STATIC, LINK IOCARD_OUT, DEVICE X, OUTPUT 26
VAR 1151, NAME E2AGNT1_DISCH, STATIC, LINK IOCARD_OUT, DEVICE X, OUTPUT 13
VAR 1152, NAME E2AGNT1_SQUIB, STATIC, LINK IOCARD_OUT, DEVICE X, OUTPUT 14
VAR 1153, NAME E2AGNT2_DISCH, STATIC, LINK IOCARD_OUT, DEVICE X, OUTPUT 15
VAR 1154, NAME E2AGNT2_SQUIB, STATIC, LINK IOCARD_OUT, DEVICE X, OUTPUT 16
VAR 1155, NAME APAGNT2_DISCH, STATIC, LINK IOCARD_OUT, DEVICE X, OUTPUT 11

```

```

VAR 1156, NAME APAGNT2_SQUIB, STATIC, LINK IOCARD_OUT, DEVICE X, OUTPUT 12
VAR 1157, NAME FIREENG1, STATIC, LINK IOCARD_OUT, DEVICE X, OUTPUT 115
VAR 1158, NAME FIREAPU, STATIC, LINK IOCARD_OUT, DEVICE X, OUTPUT 246
VAR 1159, NAME FIREENG2, STATIC, LINK IOCARD_OUT, DEVICE X, OUTPUT 118
//
//-----
//Indicators ADIRS [OUT]: -
//-----
//
VAR 0147, NAME ONBAT, STATIC, LINK IOCARD_OUT, DEVICE X, OUTPUT 54
//
//-----
//Switch type Korry [IN]: -
//-----
//
//ENG:
Var 0148, NAME MANSTART1, STATIC, Link IOCARD_SW, DEVICE X, Input 220
Var 0149, NAME MANSTART2, STATIC, Link IOCARD_SW, DEVICE X, Input 221
//VENTILATION:
Var 0150, NAME BLOWER, STATIC, Link IOCARD_SW, DEVICE X, Input 227
Var 0151, NAME EXTRACT, STATIC, Link IOCARD_SW, DEVICE X, Input 228
Var 0152, NAME CABFANS, STATIC, Link IOCARD_SW, DEVICE X, Input 93
//CARGO VENT:
Var 0153, NAME AFTISOLVALVE, STATIC, Link IOCARD_SW, DEVICE X, Input 218
//FLT CTL:
Var 0154, NAME ELAC2, STATIC, Link IOCARD_SW, DEVICE X, Input 225
Var 0155, NAME SEC2, STATIC, Link IOCARD_SW, DEVICE X, Input 226
Var 0156, NAME SEC3, STATIC, Link IOCARD_SW, DEVICE X, Input 231
Var 0157, NAME FAC2, STATIC, Link IOCARD_SW, DEVICE X, Input 232
//APU:
Var 0158, NAME MASTERSW, STATIC, Link IOCARD_SW, DEVICE X, Input 229
Var 0159, NAME START, STATIC, Link IOCARD_SW, DEVICE X, Input 230
//ANTI-ICE:
Var 0160, NAME WING, STATIC, Link IOCARD_SW, DEVICE X, Input 236
Var 0161, NAME ENG1, STATIC, Link IOCARD_SW, DEVICE X, Input 237
Var 0162, NAME ENG2, STATIC, Link IOCARD_SW, DEVICE X, Input 222
//PROBE WINDOW HEAT:
Var 0163, NAME HEAT, STATIC, Link IOCARD_SW, DEVICE X, Input 223
//CABIN PRESS:
Var 0164, NAME MODESELCP, STATIC, Link IOCARD_SW, DEVICE X, Input 216
Var 0165, NAME DITCHING, STATIC, Link IOCARD_SW, DEVICE X, Input 217
//AIR COND:
Var 0166, NAME PACK1, STATIC, Link IOCARD_SW, DEVICE X, Input 164
Var 0167, NAME ENG1BLEED, STATIC, Link IOCARD_SW, DEVICE X, Input 165
Var 0168, NAME RAMAIR, STATIC, Link IOCARD_SW, DEVICE X, Input 157
Var 0169, NAME APUBLEED, STATIC, Link IOCARD_SW, DEVICE X, Input 158
Var 0170, NAME ENG2LEED, STATIC, Link IOCARD_SW, DEVICE X, Input 150
Var 0171, NAME PACK2, STATIC, Link IOCARD_SW, DEVICE X, Input 151
Var 0172, NAME HOTAIR, STATIC, Link IOCARD_SW, DEVICE X, Input 144
//ELEC:
Var 0173, NAME GALLEY, STATIC, Link IOCARD_SW, DEVICE X, Input 156
Var 0174, NAME IDG1, STATIC, Link IOCARD_SW, DEVICE X, Input 155
Var 0175, NAME GEN1, STATIC, Link IOCARD_SW, DEVICE X, Input 162
Var 0176, NAME APUGEN, STATIC, Link IOCARD_SW, DEVICE X, Input 163
Var 0178, NAME BUSTIE, STATIC, Link IOCARD_SW, DEVICE X, Input 153
Var 0179, NAME EXTPWR, STATIC, Link IOCARD_SW, DEVICE X, Input 154
Var 0180, NAME GEN2, STATIC, Link IOCARD_SW, DEVICE X, Input 160
Var 0181, NAME IDG2, STATIC, Link IOCARD_SW, DEVICE X, Input 145
Var 0182, NAME ACESSFEED, STATIC, Link IOCARD_SW, DEVICE X, Input 159
Var 0183, NAME BAT1, STATIC, Link IOCARD_SW, DEVICE X, Input 146
Var 0184, NAME BAT2, STATIC, Link IOCARD_SW, DEVICE X, Input 147
//FUEL:
Var 0185, NAME LTKPMP1, STATIC, Link IOCARD_SW, DEVICE X, Input 18
Var 0186, NAME LTKPMP2, STATIC, Link IOCARD_SW, DEVICE X, Input 19
Var 0187, NAME CTRTKPMP1, STATIC, Link IOCARD_SW, DEVICE X, Input 11
Var 0188, NAME MODESEL, STATIC, Link IOCARD_SW, DEVICE X, Input 12
Var 0189, NAME CTRTKPMP2, STATIC, Link IOCARD_SW, DEVICE X, Input 5
Var 0190, NAME XFEED, STATIC, Link IOCARD_SW, DEVICE X, Input 4
Var 0191, NAME RTKPMP1, STATIC, Link IOCARD_SW, DEVICE X, Input 148
Var 0192, NAME RTKPMP2, STATIC, Link IOCARD_SW, DEVICE X, Input 149
//HYD:
Var 0193, NAME ENG1PUMP, STATIC, Link IOCARD_SW, DEVICE X, Input 15
Var 0194, NAME ELECPUMP, STATIC, Link IOCARD_SW, DEVICE X, Input 16
Var 0195, NAME PTU, STATIC, Link IOCARD_SW, DEVICE X, Input 9
Var 0196, NAME ENG2PUMP, STATIC, Link IOCARD_SW, DEVICE X, Input 10

```



```

Var 0197, NAME ELEC2PUMP, STATIC, Link IOCARD_SW, DEVICE X, Input 3
//CALLS:
Var 0198, NAME EMER, STATIC, Link IOCARD_SW, DEVICE X, Input 13
//OXYGEN:
Var 0199, NAME CREWSUPPLY, STATIC, Link IOCARD_SW, DEVICE X, Input 14
//RCDR:
Var 0200, NAME GNDCTL, STATIC, Link IOCARD_SW, DEVICE X, Input 20
//GPWS:
Var 0201, NAME TERR, STATIC, Link IOCARD_SW, DEVICE X, Input 76
Var 0202, NAME SYS, STATIC, Link IOCARD_SW, DEVICE X, Input 83
Var 0203, NAME GSMODE, STATIC, Link IOCARD_SW, DEVICE X, Input 84
Var 0204, NAME FLAPMODE, STATIC, Link IOCARD_SW, DEVICE X, Input 90
Var 0205, NAME LDGFLAP3, STATIC, Link IOCARD_SW, DEVICE X, Input 91
//EMER ELEC PWR:
Var 0206, NAME GEN1LINE, STATIC, Link IOCARD_SW, DEVICE X, Input 77
//EVAC:
Var 0207, NAME COMMAND, STATIC, Link IOCARD_SW, DEVICE X, Input 74
//FLT CTL:
Var 0208, NAME ELAC1, STATIC, Link IOCARD_SW, DEVICE X, Input 81
Var 0209, NAME SEC1, STATIC, Link IOCARD_SW, DEVICE X, Input 82
Var 0210, NAME FAC1, STATIC, Link IOCARD_SW, DEVICE X, Input 87
//ADIRS
Var 0211, NAME ADR1, STATIC, Link IOCARD_SW, DEVICE X, Input 72
Var 0212, NAME ADR3, STATIC, Link IOCARD_SW, DEVICE X, Input 73
Var 0213, NAME ADR2, STATIC, Link IOCARD_SW, DEVICE X, Input 88
//FIRE:
Var 1213, NAME FIREE1AG1, STATIC, Link IOCARD_SW, DEVICE X, Input 6
Var 1214, NAME FIREE1AG2, STATIC, Link IOCARD_SW, DEVICE X, Input 7
Var 1215, NAME FIREE2AG1, STATIC, Link IOCARD_SW, DEVICE X, Input 1
Var 1216, NAME FIREE2AG2, STATIC, Link IOCARD_SW, DEVICE X, Input 2
Var 1217, NAME FIREAPU1, STATIC, Link IOCARD_SW, DEVICE X, Input 0

Var 1218, NAME FIRTST1, STATIC, Link IOCARD_SW, DEVICE X, Input 63
Var 1219, NAME FIRTST2, STATIC, Link IOCARD_SW, DEVICE X, Input 66
Var 1220, NAME FIRTST3, STATIC, Link IOCARD_SW, DEVICE X, Input 69

Var 1221, NAME FIRE1, STATIC, Link IOCARD_SW, DEVICE X, Input 64
Var 1222, NAME FIRE2, STATIC, Link IOCARD_SW, DEVICE X, Input 67
Var 1223, NAME FIRE3, STATIC, Link IOCARD_SW, DEVICE X, Input 68
//
//-----
//Switches [IN]: -
//-----
//
//WIPER RAIN FO:
Var 0214, NAME WIPERFO_OFF, STATIC, Link IOCARD_SW, DEVICE X, Input 181
Var 0215, NAME WIPERFO_SLOW, STATIC, Link IOCARD_SW, DEVICE X, Input 182
Var 0216, NAME WIPERFO_FAST, STATIC, Link IOCARD_SW, DEVICE X, Input 183
Var 0217, NAME RAINRPLNTFO, STATIC, Link IOCARD_SW, DEVICE X, Input 180
//CARGO SMOKE:
Var 0218, NAME DISCH1, STATIC, Link IOCARD_SW, DEVICE X, Input 184
Var 0219, NAME TEST, STATIC, Link IOCARD_SW, DEVICE X, Input 185
Var 0220, NAME DISCH2, STATIC, Link IOCARD_SW, DEVICE X, Input 186
//SIGNS:
Var 0221, NAME SEATBELTS_ON, STATIC, Link IOCARD_SW, DEVICE X, Input 191
Var 0222, NAME SEATBELTS_OFF, STATIC, Link IOCARD_SW, DEVICE X, Input 192
Var 0223, NAME NOSMOKING_ON, STATIC, Link IOCARD_SW, DEVICE X, Input 189
Var 0224, NAME NOSMOKING_OFF, STATIC, Link IOCARD_SW, DEVICE X, Input 190
Var 0225, NAME EMEREXITLT_ON, STATIC, Link IOCARD_SW, DEVICE X, Input 187
Var 0226, NAME EMEREXITLT_OFF, STATIC, Link IOCARD_SW, DEVICE X, Input 188
//INT LT:
Var 0227, NAME ICEIND, STATIC, Link IOCARD_SW, DEVICE X, Input 193
Var 0228, NAME DOME_BRT, STATIC, Link IOCARD_SW, DEVICE X, Input 194
Var 0229, NAME DOME_OFF, STATIC, Link IOCARD_SW, DEVICE X, Input 195
Var 0230, NAME ANNLT_TEST, STATIC, Link IOCARD_SW, DEVICE X, Input 196
Var 0231, NAME ANNLT_DIM, STATIC, Link IOCARD_SW, DEVICE X, Input 197
//CABIN PRESS:
Var 0232, NAME MANVS_UP, STATIC, Link IOCARD_SW, DEVICE X, Input 211
Var 0233, NAME MANVS_DN, STATIC, Link IOCARD_SW, DEVICE X, Input 212
//EXT LT:
Var 0234, NAME STROBE_ON, STATIC, Link IOCARD_SW, DEVICE X, Input 205
Var 0235, NAME STROBE_OFF, STATIC, Link IOCARD_SW, DEVICE X, Input 206
Var 0236, NAME BEACON, STATIC, Link IOCARD_SW, DEVICE X, Input 207
Var 0237, NAME EXTWING, STATIC, Link IOCARD_SW, DEVICE X, Input 208
Var 0238, NAME NAVLOGO_2, STATIC, Link IOCARD_SW, DEVICE X, Input 209

```

```

Var 0239, NAME NAVLOGO_OFF, STATIC, Link IOCARD_SW, DEVICE X, Input 210
Var 0240, NAME RWYTURNOFF, STATIC, Link IOCARD_SW, DEVICE X, Input 204
Var 0241, NAME LANDL_ON, STATIC, Link IOCARD_SW, DEVICE X, Input 202
Var 0242, NAME LANDL_RET, STATIC, Link IOCARD_SW, DEVICE X, Input 203
Var 0243, NAME LANDR_ON, STATIC, Link IOCARD_SW, DEVICE X, Input 200
Var 0244, NAME LANDR_RET, STATIC, Link IOCARD_SW, DEVICE X, Input 201
Var 0245, NAME NOSE_TO, STATIC, Link IOCARD_SW, DEVICE X, Input 198
Var 0246, NAME NOSE_OFF, STATIC, Link IOCARD_SW, DEVICE X, Input 199
//AIR COND:
Var 0247, NAME AIRCOOL_SHUT, STATIC, Link IOCARD_SW, DEVICE X, Input 213
Var 0248, NAME AIRCOOL_AUTO, STATIC, Link IOCARD_SW, DEVICE X, Input 214
Var 0249, NAME AIRCOOL_OPEN, STATIC, Link IOCARD_SW, DEVICE X, Input 215
Var 0250, NAME PACKFLOW_LO, STATIC, Link IOCARD_SW, DEVICE X, Input 50
Var 0251, NAME PACKFLOW_NORM, STATIC, Link IOCARD_SW, DEVICE X, Input 51
Var 0252, NAME PACKFLOW_HI, STATIC, Link IOCARD_SW, DEVICE X, Input 52
//HYD
Var 0253, NAME RATMANON, STATIC, Link IOCARD_SW, DEVICE X, Input 65
//WIPER RAIN CAP:
Var 0254, NAME WIPERCAP_OFF, STATIC, Link IOCARD_SW, DEVICE X, Input 42
Var 0255, NAME WIPERCAP_SLOW, STATIC, Link IOCARD_SW, DEVICE X, Input 43
Var 0256, NAME WIPERCAP_FAST, STATIC, Link IOCARD_SW, DEVICE X, Input 44
Var 0257, NAME RAINRPLNTCAP, STATIC, Link IOCARD_SW, DEVICE X, Input 41
//CALLS:
Var 0258, NAME MECH, STATIC, Link IOCARD_SW, DEVICE X, Input 40
Var 0259, NAME FWD, STATIC, Link IOCARD_SW, DEVICE X, Input 39
Var 0260, NAME AFT, STATIC, Link IOCARD_SW, DEVICE X, Input 38
//OXYGEN:
Var 0261, NAME MANMASKON, STATIC, Link IOCARD_SW, DEVICE X, Input 49
//RCDR:
Var 0262, NAME CVRERASE, STATIC, Link IOCARD_SW, DEVICE X, Input 37
Var 0263, NAME CVRTEST, STATIC, Link IOCARD_SW, DEVICE X, Input 36
//EMER ELEC PWR:
Var 0264, NAME EMERGENTEST, STATIC, Link IOCARD_SW, DEVICE X, Input 47
Var 0265, NAME MANON, STATIC, Link IOCARD_SW, DEVICE X, Input 48
//EVAC:
Var 0266, NAME HORNSHUTOFF, STATIC, Link IOCARD_SW, DEVICE X, Input 45
Var 0267, NAME CAPTPURS, STATIC, Link IOCARD_SW, DEVICE X, Input 46
//ADIRS:
Var 0268, NAME SIR1_OFF, STATIC, Link IOCARD_SW, DEVICE X, Input 54
Var 0269, NAME SIR1_NAV, STATIC, Link IOCARD_SW, DEVICE X, Input 55
Var 0270, NAME SIR1_ATT, STATIC, Link IOCARD_SW, DEVICE X, Input 56

Var 0271, NAME SIR3_OFF, STATIC, Link IOCARD_SW, DEVICE X, Input 57
Var 0272, NAME SIR3_NAV, STATIC, Link IOCARD_SW, DEVICE X, Input 58
Var 0273, NAME SIR3_ATT, STATIC, Link IOCARD_SW, DEVICE X, Input 59

Var 0274, NAME SIR2_OFF, STATIC, Link IOCARD_SW, DEVICE X, Input 60
Var 0275, NAME SIR2_NAV, STATIC, Link IOCARD_SW, DEVICE X, Input 61
Var 0276, NAME SIR2_ATT, STATIC, Link IOCARD_SW, DEVICE X, Input 62

//Var 0277, NAME DISPLAY_TEST, STATIC, Link IOCARD_SW, DEVICE X, Input 189
//Var 0278, NAME DISPLAY_TKGS, STATIC, Link IOCARD_SW, DEVICE X, Input 190
//Var 0279, NAME DISPLAY_PPOS, STATIC, Link IOCARD_SW, DEVICE X, Input 191
//Var 0280, NAME DISPLAY_WIND, STATIC, Link IOCARD_SW, DEVICE X, Input 192
//Var 0281, NAME DISPLAY_HDG, STATIC, Link IOCARD_SW, DEVICE X, Input 193
//Var 0282, NAME DISPLAY_STS, STATIC, Link IOCARD_SW, DEVICE X, Input 194
//Var 0283, NAME DSYS_OFF, STATIC, Link IOCARD_SW, DEVICE X, Input 279
//Var 0284, NAME DSYS_1, STATIC, Link IOCARD_SW, DEVICE X, Input 280
//Var 0285, NAME DSYS_2, STATIC, Link IOCARD_SW, DEVICE X, Input 281
//Var 0286, NAME DSYS_3, STATIC, Link IOCARD_SW, DEVICE X, Input 282
//
//-----
//POTENTIOMETERS [IN]: -
//-----
//
VAR 0287, NAME LDGELEV, STATIC, LINK IOCARD_ANALOGIC, DEVICE X, Input 1, PosL 0, PosC 127, PosR 255
VAR 0302, NAME INTEGLT, STATIC, LINK IOCARD_ANALOGIC, DEVICE X, Input 2, PosL 0, PosC 127, PosR 255

//
//-----
//DISPLAY [OUT]: -
//-----
//
VAR 290, NAME DISPLAY_BAT11, STATIC, Link IOCARD_DISPLAY, DEVICE X, Digit 73, Numbers 1 //
DISPLAY_BAT1 4th 7-segment display

```

```
VAR 291, NAME DISPLAY_BAT12, STATIC, Link IOCARD_DISPLAY, DEVICE X, Digit 72, Numbers 1 //  
DISPLAY_BAT1 3th 7-segment display  
VAR 292, NAME DISPLAY_BAT13, STATIC, Link IOCARD_DISPLAY, DEVICE X, Digit 71, Numbers 1 //  
DISPLAY_BAT1 2rd 7-segment display  
VAR 293, NAME DISPLAY_BAT14, STATIC, Link IOCARD_DISPLAY, DEVICE X, Digit 70, Numbers 1 //  
DISPLAY_BAT1 1nd 7-segment display  
VAR 300, NAME BAT1DOT, STATIC, LINK IOCARD_OUT, DEVICE X, OUTPUT 182 // DISPLAY_BAT1 dot 7-segment  
display
```

```
VAR 294, NAME DISPLAY_BAT21, STATIC, Link IOCARD_DISPLAY, DEVICE X, Digit 67, Numbers 1 //  
DISPLAY_BAT1 4th 7-segment display  
VAR 295, NAME DISPLAY_BAT22, STATIC, Link IOCARD_DISPLAY, DEVICE X, Digit 66, Numbers 1 //  
DISPLAY_BAT1 3th 7-segment display  
VAR 296, NAME DISPLAY_BAT23, STATIC, Link IOCARD_DISPLAY, DEVICE X, Digit 65, Numbers 1 //  
DISPLAY_BAT1 2rd 7-segment display  
VAR 297, NAME DISPLAY_BAT24, STATIC, Link IOCARD_DISPLAY, DEVICE X, Digit 64, Numbers 1 //  
DISPLAY_BAT1 1st 7-segment display  
VAR 301 NAME BAT2DOT, STATIC, LINK IOCARD_OUT, DEVICE X, OUTPUT 179 // DISPLAY_BAT2 dot 7-segment  
display
```

```
VAR 0288, NAME DISPLAY_BAT1, STATIC, VALUE 0 // BAT1 VALUE  
{  
  CALL &SETBAT1  
}
```

```
VAR 0289, NAME DISPLAY_BAT2, STATIC, VALUE 0 // BAT2 VALUE  
{  
  CALL &SETBAT2  
}
```

```
VAR 298, NAME SETBAT2, STATIC, Link SUBROUTINE  
{  
  IF &DISPLAY_BAT2 = 0  
  {  
    &DISPLAY_BAT21 = -999999  
    &DISPLAY_BAT22 = -999999  
    &DISPLAY_BAT23 = -999999  
    &DISPLAY_BAT24 = -999999  
    &BAT2DOT = 0  
  }  
  ELSE  
  {  
    &DISPLAY_BAT21 = DIV &DISPLAY_BAT2 ,100  
    L0 = MOD &DISPLAY_BAT2 ,100  
    &DISPLAY_BAT22 = DIV L0 ,10  
    &DISPLAY_BAT23 = MOD &DISPLAY_BAT2 ,10  
    &DISPLAY_BAT24 = -999999  
    &BAT2DOT = 1  
  }  
}
```

```
VAR 299, NAME SETBAT1, STATIC, Link SUBROUTINE  
{  
  IF &DISPLAY_BAT1 = 0  
  {  
    &DISPLAY_BAT11 = -999999  
    &DISPLAY_BAT12 = -999999  
    &DISPLAY_BAT13 = -999999  
    &DISPLAY_BAT14 = -999999  
    &BAT1DOT = 0  
  }  
  ELSE  
  {  
    &DISPLAY_BAT11 = DIV &DISPLAY_BAT1 ,100  
    L0 = MOD &DISPLAY_BAT1 ,100  
    &DISPLAY_BAT12 = DIV L0 ,10  
    &DISPLAY_BAT13 = MOD &DISPLAY_BAT1 ,10  
    &DISPLAY_BAT14 = -999999  
    &BAT1DOT = 1  
  }  
}
```