



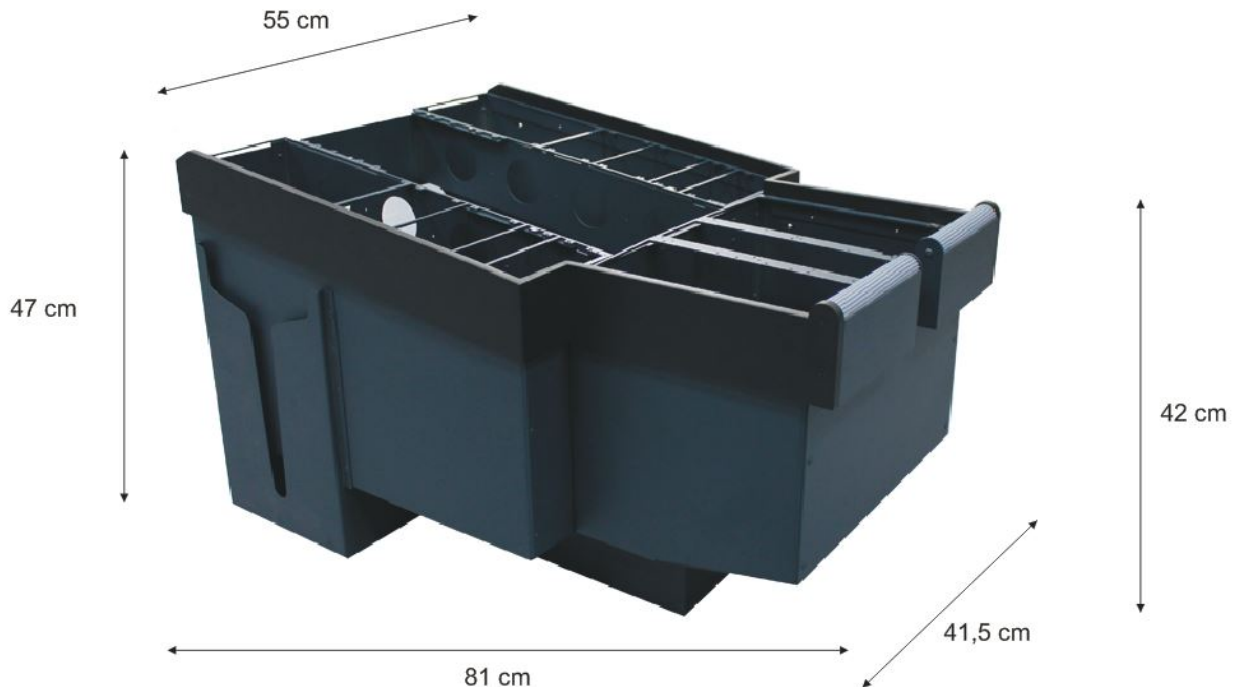
Pedestal Airbus A320
Airbus A320 Pedestal

Datos técnicos:

Technical data:

Las medidas del hardware (ancho x alto x profundidad) son: 55 x 47 x 81 cm.

The measurements of the hardware (width x height x depth) are: 55 x 47 x 81 cm.



Datos de Configuración:

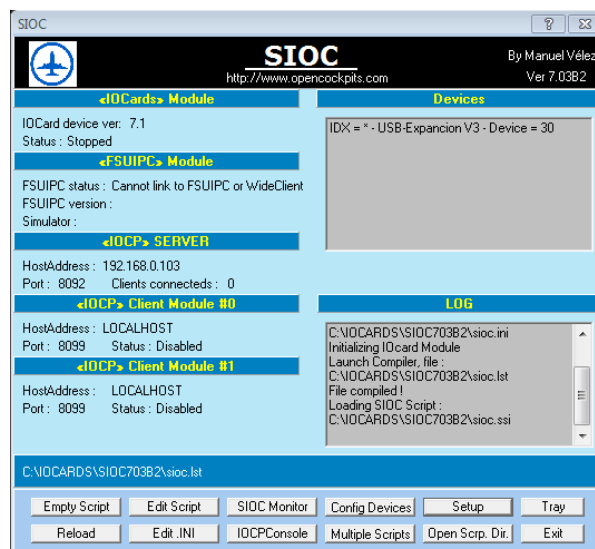
Configuration data:

* Conectar el hardware a través de los cables USB al puerto correspondiente del ordenador.

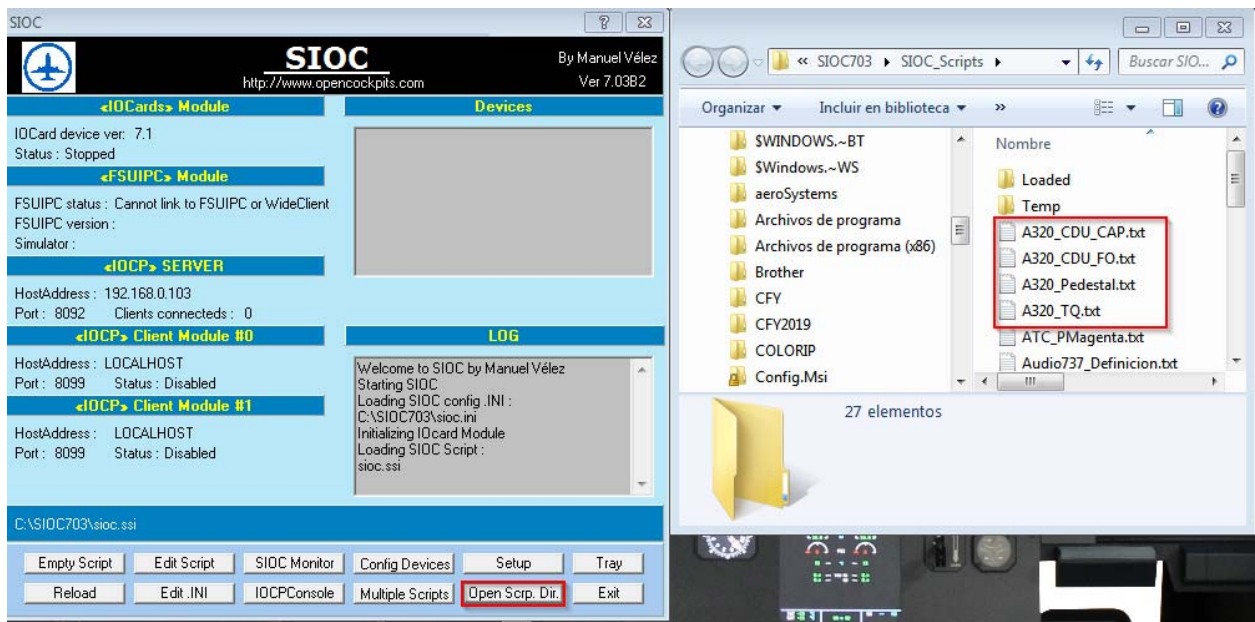
Connect the hardware through the USB cables to the computer.

* Ejecutar o instalar SIOC (https://www.opencockpits.com/catalog/info/information.php?info_id=45&language=es)

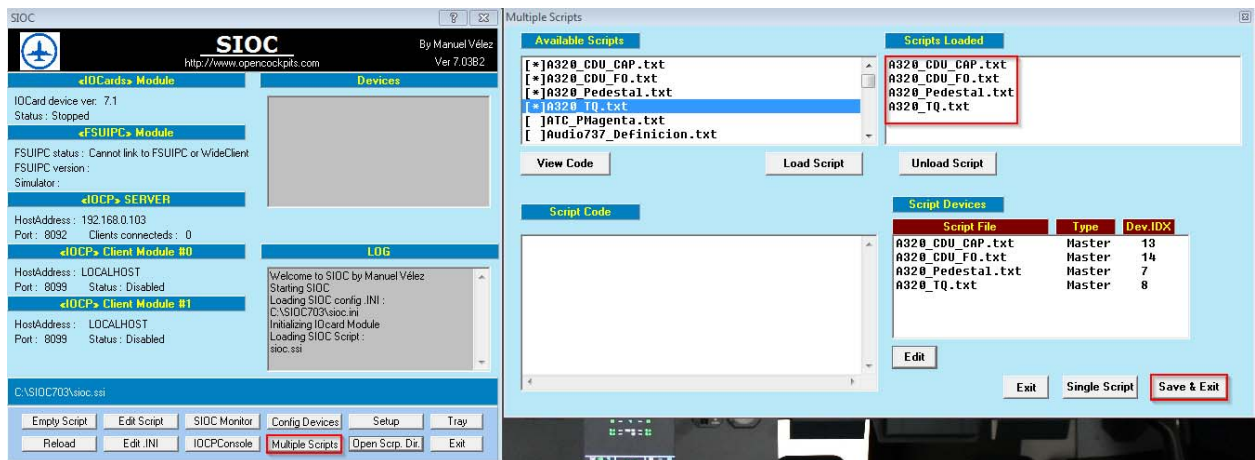
Install or exec SIOC software.



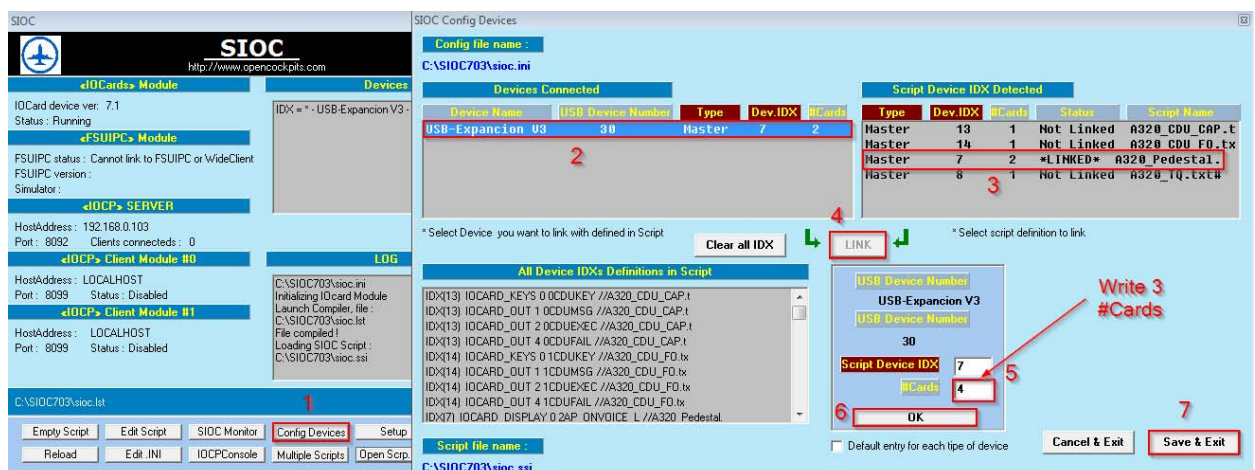
* Copiar el código script en el directorio de scripts de SIOC (Pedestal, ambos MCDU y TQ).
Copy the script code in the SIOC script directory (Pedestal, both MCDU and TQ).



* Cargar el código script en SIOC.
Load the script code in SIOC.



* Configurar el dispositivo (Repetir el proceso con cada dispositivo).
Configure the device (Repeat the steps with each dispositive).



* Configurar el hardware en su Addons favorita.
Configure the hardware in your favorite Addons.

Precaución:

Caution:

* Montar y fijar adecuadamente el hardware.
Mount and fix the hardware properly.

* Hardware comprobado para funcionar a la tensión de entrada de 3,2V, 5V (Master Card) y 12V (ledstrip)

** Hardware tested to operate at the voltage of 3,2V 5V (Master Card) and 12V (ledstrip)*

Declaración de entradas y salidas:

I/O declaration:

```
//-----  
//-                PEDESTAL A320 PROSIM SCRIPT CODE                -  
//-----  
//  
//-----  
//--DEVICE NUMBER INFO:                                          -  
//-----  
// PEDESTAL:  
// Master n.1 -> Device 7.                                         -  
// Master n.2 -> Device 7.                                         -  
// Master n.3 -> Device 7.                                         -  
//-----  
  
//PEDESTAL SIDE L  
  
//ECAM INPUTS  
  
VAR 7001, NAME ECAM_TO, STATIC, LINK IOCARD_SW, DEVICE 7, INPUT 71  
VAR 7002, NAME ECAM_EMER, STATIC, LINK IOCARD_SW, DEVICE 7, INPUT 70  
  
VAR 7003, NAME ECAM_ENG, STATIC, LINK IOCARD_SW, DEVICE 7, INPUT 54  
VAR 7004, NAME ECAM_BLEED, STATIC, LINK IOCARD_SW, DEVICE 7, INPUT 55  
VAR 7005, NAME ECAM_PRESS, STATIC, LINK IOCARD_SW, DEVICE 7, INPUT 56  
VAR 7006, NAME ECAM_ELEC, STATIC, LINK IOCARD_SW, DEVICE 7, INPUT 57  
VAR 7007, NAME ECAM_HYD, STATIC, LINK IOCARD_SW, DEVICE 7, INPUT 58  
VAR 7008, NAME ECAM_FUEL, STATIC, LINK IOCARD_SW, DEVICE 7, INPUT 59  
  
VAR 7009, NAME ECAM_APU, STATIC, LINK IOCARD_SW, DEVICE 7, INPUT 60  
VAR 7010, NAME ECAM_COND, STATIC, LINK IOCARD_SW, DEVICE 7, INPUT 61  
VAR 7011, NAME ECAM_DOOR, STATIC, LINK IOCARD_SW, DEVICE 7, INPUT 62  
VAR 7012, NAME ECAM_WHEEL, STATIC, LINK IOCARD_SW, DEVICE 7, INPUT 63  
VAR 7013, NAME ECAM_FCTL, STATIC, LINK IOCARD_SW, DEVICE 7, INPUT 64  
VAR 7014, NAME ECAM_ALL, STATIC, LINK IOCARD_SW, DEVICE 7, INPUT 69  
  
VAR 7015, NAME ECAM_CLR, STATIC, LINK IOCARD_SW, DEVICE 7, INPUT 65  
VAR 7016, NAME ECAM_STS, STATIC, LINK IOCARD_SW, DEVICE 7, INPUT 66  
VAR 7017, NAME ECAM_RCL, STATIC, LINK IOCARD_SW, DEVICE 7, INPUT 68  
VAR 7018, NAME ECAM_RCLR, STATIC, LINK IOCARD_SW, DEVICE 7, INPUT 67  
  
//ECAM OUTPUTS  
  
VAR 7019, NAME ECAM_O_ENG, STATIC, LINK IOCARD_OUT, DEVICE 7, OUTPUT 27  
VAR 7020, NAME ECAM_O_BLEED, STATIC, LINK IOCARD_OUT, DEVICE 7, OUTPUT 28  
VAR 7021, NAME ECAM_O_PRESS, STATIC, LINK IOCARD_OUT, DEVICE 7, OUTPUT 29  
VAR 7022, NAME ECAM_O_ELEC, STATIC, LINK IOCARD_OUT, DEVICE 7, OUTPUT 30  
VAR 7023, NAME ECAM_O_HYD, STATIC, LINK IOCARD_OUT, DEVICE 7, OUTPUT 31  
VAR 7024, NAME ECAM_O_FUEL, STATIC, LINK IOCARD_OUT, DEVICE 7, OUTPUT 32  
  
VAR 7025, NAME ECAM_O_APU, STATIC, LINK IOCARD_OUT, DEVICE 7, OUTPUT 33  
VAR 7026, NAME ECAM_O_COND, STATIC, LINK IOCARD_OUT, DEVICE 7, OUTPUT 34  
VAR 7027, NAME ECAM_O_DOOR, STATIC, LINK IOCARD_OUT, DEVICE 7, OUTPUT 35  
VAR 7028, NAME ECAM_O_WHEEL, STATIC, LINK IOCARD_OUT, DEVICE 7, OUTPUT 36
```

```
VAR 7029, NAME ECAM_O_FCTL, STATIC, LINK IOCARD_OUT, DEVICE 7, OUTPUT 37

VAR 7030, NAME ECAM_O_CLR, STATIC, LINK IOCARD_OUT, DEVICE 7, OUTPUT 38
VAR 7031, NAME ECAM_O_STS, STATIC, LINK IOCARD_OUT, DEVICE 7, OUTPUT 39
VAR 7032, NAME ECAM_O_RCLR, STATIC, LINK IOCARD_OUT, DEVICE 7, OUTPUT 40

//DOOR INPUTS

VAR 7033, NAME DOOR_UNLOCK, STATIC, LINK IOCARD_SW, DEVICE 7, INPUT 40
VAR 7034, NAME DOOR_LOCK, STATIC, LINK IOCARD_SW, DEVICE 7, INPUT 41

//DOOR OUTPUTS

VAR 7035, NAME DOOR_KORRY, STATIC, LINK IOCARD_OUT, DEVICE 7, OUTPUT 21

//SWITCHING INPUTS

VAR 7036, NAME SW_ATT_CAP, STATIC, LINK IOCARD_SW, DEVICE 7, INPUT 45
VAR 7037, NAME SW_ATT_NORM, STATIC, LINK IOCARD_SW, DEVICE 7, INPUT 46
VAR 7038, NAME SW_ATT_FO, STATIC, LINK IOCARD_SW, DEVICE 7, INPUT 47

VAR 7039, NAME SW_AD_CAP, STATIC, LINK IOCARD_SW, DEVICE 7, INPUT 48
VAR 7040, NAME SW_AD_NORM, STATIC, LINK IOCARD_SW, DEVICE 7, INPUT 49
VAR 7041, NAME SW_AD_FO, STATIC, LINK IOCARD_SW, DEVICE 7, INPUT 50

VAR 7042, NAME SW_DMC_CAP, STATIC, LINK IOCARD_SW, DEVICE 7, INPUT 51
VAR 7043, NAME SW_DMC_NORM, STATIC, LINK IOCARD_SW, DEVICE 7, INPUT 52
VAR 7044, NAME SW_DMC_FO, STATIC, LINK IOCARD_SW, DEVICE 7, INPUT 53

VAR 7045, NAME SW_XFR_CAP, STATIC, LINK IOCARD_SW, DEVICE 7, INPUT 42
VAR 7046, NAME SW_XFR_NORM, STATIC, LINK IOCARD_SW, DEVICE 7, INPUT 43
VAR 7047, NAME SW_XFR_FO, STATIC, LINK IOCARD_SW, DEVICE 7, INPUT 44

//ARRANQUE DE MOTORES INPUTS

VAR 7048, NAME ENG_M1, STATIC, LINK IOCARD_SW, DEVICE 7, INPUT 112
VAR 7049, NAME ENG_M2, STATIC, LINK IOCARD_SW, DEVICE 7, INPUT 113
VAR 7050, NAME ENG_CRACK, STATIC, LINK IOCARD_SW, DEVICE 7, INPUT 114
VAR 7051, NAME ENG_NORM, STATIC, LINK IOCARD_SW, DEVICE 7, INPUT 115
VAR 7052, NAME ENG_IGN, STATIC, LINK IOCARD_SW, DEVICE 7, INPUT 116

//ARRANQUE DE MOTORES OUPUTS

VAR 7053, NAME ENG_K1UP, STATIC, LINK IOCARD_OUT, DEVICE 7, OUTPUT 24
VAR 7054, NAME ENG_K1DW, STATIC, LINK IOCARD_OUT, DEVICE 7, OUTPUT 23

VAR 7055, NAME ENG_K2UP, STATIC, LINK IOCARD_OUT, DEVICE 7, OUTPUT 26
VAR 7056, NAME ENG_K2DW, STATIC, LINK IOCARD_OUT, DEVICE 7, OUTPUT 25

//AUDIO INPUTS

VAR 7057, NAME AP_TB1, STATIC, LINK IOCARD_SW, DEVICE 7, INPUT 0
VAR 7058, NAME AP_TB2, STATIC, LINK IOCARD_SW, DEVICE 7, INPUT 1
VAR 7059, NAME AP_TB3, STATIC, LINK IOCARD_SW, DEVICE 7, INPUT 2
VAR 7060, NAME AP_TB4, STATIC, LINK IOCARD_SW, DEVICE 7, INPUT 3
VAR 7061, NAME AP_TB5, STATIC, LINK IOCARD_SW, DEVICE 7, INPUT 4
VAR 7062, NAME AP_TB6, STATIC, LINK IOCARD_SW, DEVICE 7, INPUT 5
VAR 7063, NAME AP_TB7, STATIC, LINK IOCARD_SW, DEVICE 7, INPUT 6

VAR 7064, NAME AP_RK1, STATIC, LINK IOCARD_SW, DEVICE 7, INPUT 10
VAR 7065, NAME AP_RK2, STATIC, LINK IOCARD_SW, DEVICE 7, INPUT 11
VAR 7066, NAME AP_RK3, STATIC, LINK IOCARD_SW, DEVICE 7, INPUT 12
VAR 7067, NAME AP_RK4, STATIC, LINK IOCARD_SW, DEVICE 7, INPUT 13
VAR 7068, NAME AP_RK5, STATIC, LINK IOCARD_SW, DEVICE 7, INPUT 14
VAR 7069, NAME AP_RK6, STATIC, LINK IOCARD_SW, DEVICE 7, INPUT 15
VAR 7070, NAME AP_RK7, STATIC, LINK IOCARD_SW, DEVICE 7, INPUT 16

VAR 7071, NAME AP_INT, STATIC, LINK IOCARD_SW, DEVICE 7, INPUT 25
VAR 7072, NAME AP_RAD, STATIC, LINK IOCARD_SW, DEVICE 7, INPUT 26
VAR 7073, NAME AP_ONVOICE, STATIC, LINK IOCARD_SW, DEVICE 7, INPUT 7
VAR 7074, NAME AP_RESET, STATIC, LINK IOCARD_SW, DEVICE 7, INPUT 9
VAR 7075, NAME AP_RK8, STATIC, LINK IOCARD_SW, DEVICE 7, INPUT 17
VAR 7076, NAME AP_PA, STATIC, LINK IOCARD_SW, DEVICE 7, INPUT 8
```

```
VAR 7077, NAME AP_RK9, STATIC, LINK IOCARD_SW, DEVICE 7, INPUT 18
VAR 7078, NAME AP_RK10, STATIC, LINK IOCARD_SW, DEVICE 7, INPUT 19
VAR 7079, NAME AP_RK11, STATIC, LINK IOCARD_SW, DEVICE 7, INPUT 20
VAR 7080, NAME AP_RK12, STATIC, LINK IOCARD_SW, DEVICE 7, INPUT 21
VAR 7081, NAME AP_RK13, STATIC, LINK IOCARD_SW, DEVICE 7, INPUT 22
VAR 7082, NAME AP_RK14, STATIC, LINK IOCARD_SW, DEVICE 7, INPUT 23
VAR 7083, NAME AP_RK15, STATIC, LINK IOCARD_SW, DEVICE 7, INPUT 24
```

```
//AUDIO OUTPUTS
```

```
VAR 7084, NAME AP_TB1_UP, STATIC, LINK IOCARD_DISPLAY, Device 7, Digit 32, Numbers 1
VAR 7085, NAME AP_TB1_DW, STATIC, LINK IOCARD_DISPLAY, Device 7, Digit 41, Numbers 1
VAR 7086, NAME AP_TB2_UP, STATIC, LINK IOCARD_DISPLAY, Device 7, Digit 33, Numbers 1
VAR 7087, NAME AP_TB2_DW, STATIC, LINK IOCARD_DISPLAY, Device 7, Digit 42, Numbers 1
VAR 7088, NAME AP_TB3_UP, STATIC, LINK IOCARD_DISPLAY, Device 7, Digit 34, Numbers 1
VAR 7089, NAME AP_TB3_DW, STATIC, LINK IOCARD_DISPLAY, Device 7, Digit 43, Numbers 1
VAR 7090, NAME AP_TB4_UP, STATIC, LINK IOCARD_DISPLAY, Device 7, Digit 35, Numbers 1
VAR 7091, NAME AP_TB4_DW, STATIC, LINK IOCARD_DISPLAY, Device 7, Digit 44, Numbers 1
VAR 7092, NAME AP_TB5_UP, STATIC, LINK IOCARD_DISPLAY, Device 7, Digit 36, Numbers 1
VAR 7093, NAME AP_TB5_DW, STATIC, LINK IOCARD_DISPLAY, Device 7, Digit 45, Numbers 1
VAR 7094, NAME AP_TB6_UP, STATIC, LINK IOCARD_DISPLAY, Device 7, Digit 37, Numbers 1
VAR 7095, NAME AP_TB6_DW, STATIC, LINK IOCARD_DISPLAY, Device 7, Digit 46, Numbers 1
VAR 7096, NAME AP_TB7_UP, STATIC, LINK IOCARD_DISPLAY, Device 7, Digit 38, Numbers 1
VAR 7097, NAME AP_TB7_DW, STATIC, LINK IOCARD_DISPLAY, Device 7, Digit 47, Numbers 1
```

```
VAR 7098, NAME AP_RK1_L, STATIC, LINK IOCARD_DISPLAY, Device 7, Digit 48, Numbers 1
VAR 7099, NAME AP_RK2_L, STATIC, LINK IOCARD_DISPLAY, Device 7, Digit 49, Numbers 1
VAR 7100, NAME AP_RK3_L, STATIC, LINK IOCARD_DISPLAY, Device 7, Digit 50, Numbers 1
VAR 7101, NAME AP_RK4_L, STATIC, LINK IOCARD_DISPLAY, Device 7, Digit 51, Numbers 1
VAR 7102, NAME AP_RK5_L, STATIC, LINK IOCARD_DISPLAY, Device 7, Digit 52, Numbers 1
VAR 7103, NAME AP_RK6_L, STATIC, LINK IOCARD_DISPLAY, Device 7, Digit 53, Numbers 1
VAR 7104, NAME AP_RK7_L, STATIC, LINK IOCARD_DISPLAY, Device 7, Digit 54, Numbers 1
```

```
VAR 7105, NAME AP_ONVOICE_L, STATIC, LINK IOCARD_DISPLAY, Device 7, Digit 39, Numbers 1
VAR 7106, NAME AP_PA_L, STATIC, LINK IOCARD_DISPLAY, Device 7, Digit 55, Numbers 1
VAR 7107, NAME AP_RK8_L, STATIC, LINK IOCARD_DISPLAY, Device 7, Digit 40, Numbers 1
```

```
VAR 7108, NAME AP_RK9_L, STATIC, LINK IOCARD_DISPLAY, Device 7, Digit 56, Numbers 1
VAR 7109, NAME AP_RK10_L, STATIC, LINK IOCARD_DISPLAY, Device 7, Digit 57, Numbers 1
VAR 7110, NAME AP_RK11_L, STATIC, LINK IOCARD_DISPLAY, Device 7, Digit 58, Numbers 1
VAR 7111, NAME AP_RK12_L, STATIC, LINK IOCARD_DISPLAY, Device 7, Digit 59, Numbers 1
VAR 7112, NAME AP_RK13_L, STATIC, LINK IOCARD_DISPLAY, Device 7, Digit 60, Numbers 1
VAR 7113, NAME AP_RK14_L, STATIC, LINK IOCARD_DISPLAY, Device 7, Digit 61, Numbers 1
VAR 7114, NAME AP_RK15_L, STATIC, LINK IOCARD_DISPLAY, Device 7, Digit 62, Numbers 1
```

```
//RADIO INPUTS
```

```
VAR 7175, NAME RC_CHANGE, STATIC, LINK IOCARD_SW, DEVICE 7, INPUT 31
VAR 7115, NAME RC_VHF1, STATIC, LINK IOCARD_SW, DEVICE 7, INPUT 32
VAR 7116, NAME RC_VHF2, STATIC, LINK IOCARD_SW, DEVICE 7, INPUT 33
VAR 7117, NAME RC_NAV, STATIC, LINK IOCARD_SW, DEVICE 7, INPUT 34
VAR 7118, NAME RC_VOR, STATIC, LINK IOCARD_SW, DEVICE 7, INPUT 35
VAR 7119, NAME RC_ILS, STATIC, LINK IOCARD_SW, DEVICE 7, INPUT 36
VAR 7120, NAME RC_ADF, STATIC, LINK IOCARD_SW, DEVICE 7, INPUT 37
VAR 7121, NAME RC_BFO, STATIC, LINK IOCARD_SW, DEVICE 7, INPUT 38
VAR 7122, NAME RC_SWITCH, STATIC, LINK IOCARD_SW, DEVICE 7, INPUT 39
```

```
VAR 7123, name RC_ENC_DW, STATIC, LINK IOCARD_ENCODER, DEVICE 7, Input 29, Aceleration 3, Type 2
```

```
VAR 7124, name RC_ENC_UP, STATIC
```

```
VAR 7310, name RC_ENC_DC, STATIC, LINK IOCARD_ENCODER, DEVICE 7, Input 27, Aceleration 3, Type 2
```

```
{
&RC_ENC_UP = &RC_ENC_DC * -0.5
}
```

```
VAR 7410, name RC_ENC_DC2, STATIC, LINK IOCARD_ENCODER, DEVICE 7, Input 28, Aceleration 3, Type 2
```

```
{
&RC_ENC_UP = &RC_ENC_DC * -0.5
}
```

```
//RADIO OUTPUTS
```

```

VAR 7125, NAME RC_ACTIVE_1, STATIC, LINK IOCARD_DISPLAY, Device 7, Digit 0, Numbers 6
{
  IF &RC_ACTIVE_1 = -1
  {
    &RC_ACTIVE_1 = -999999
    &RC_DOT1 = 0
    &RC_DOT2 = 0
  }
  ELSE
  {
    IF &RC_ACTIVE_1 > 999999
    {
      &RC_DOT2 = 0
      &RC_DOT1 = 1
    }
    ELSE
    {
      &RC_DOT2 = 1
      IF &RC_ACTIVE_1 > 0
      {
        &RC_DOT1 = 0
      }
    }
  }
}

VAR 7131, NAME CR_ACTIVE_1, STATIC, LINK IOCARD_DISPLAY, Device 7, Digit 6, Numbers 6
{
  IF &CR_ACTIVE_1 = -1
  {
    &CR_ACTIVE_1 = -999999
    &RC_DOT1 = 0
    &RC_DOT2 = 0
  }
  ELSE
  {
    IF &CR_ACTIVE_1 > 999999
    {
      &RC_DOT2 = 1
      &RC_DOT1 = 0
    }
    ELSE
    {
      &RC_DOT2 = 1
      IF &CR_ACTIVE_1 > 0
      {
        &RC_DOT1 = 0
      }
    }
  }
}

VAR 7137, NAME RC_VHF1_L, STATIC, LINK IOCARD_OUT, DEVICE 7, OUTPUT 11
VAR 7138, NAME RC_VHF2_L, STATIC, LINK IOCARD_OUT, DEVICE 7, OUTPUT 12
VAR 7139, NAME RC_SEL, STATIC, LINK IOCARD_OUT, DEVICE 7, OUTPUT 13
VAR 7140, NAME RC_NAV_L, STATIC, LINK IOCARD_OUT, DEVICE 7, OUTPUT 14
VAR 7141, NAME RC_VOR_L, STATIC, LINK IOCARD_OUT, DEVICE 7, OUTPUT 15
VAR 7142, NAME RC_ILS_L, STATIC, LINK IOCARD_OUT, DEVICE 7, OUTPUT 16
VAR 7143, NAME RC_ADF_L, STATIC, LINK IOCARD_OUT, DEVICE 7, OUTPUT 17
VAR 7144, NAME RC_BFO_L, STATIC, LINK IOCARD_OUT, DEVICE 7, OUTPUT 18
VAR 7304, NAME RC_DOT1, STATIC, LINK IOCARD_OUT, DEVICE 7, OUTPUT 19
VAR 7305, NAME RC_DOT2, STATIC, LINK IOCARD_OUT, DEVICE 7, OUTPUT 20

```

```
//PEDESTAL SIDE R
```

```
//RADIO INPUTS
```

```

VAR 7176, NAME RO_CHANGE, STATIC, LINK IOCARD_SW, DEVICE 7, INPUT 103
VAR 7145, NAME RO_VHF1, STATIC, LINK IOCARD_SW, DEVICE 7, INPUT 104
VAR 7146, NAME RO_VHF2, STATIC, LINK IOCARD_SW, DEVICE 7, INPUT 105
VAR 7147, NAME RO_NAV, STATIC, LINK IOCARD_SW, DEVICE 7, INPUT 106
VAR 7148, NAME RO_VOR, STATIC, LINK IOCARD_SW, DEVICE 7, INPUT 107
VAR 7149, NAME RO_ILS, STATIC, LINK IOCARD_SW, DEVICE 7, INPUT 108
VAR 7150, NAME RO_ADF, STATIC, LINK IOCARD_SW, DEVICE 7, INPUT 109

```

```

VAR 7151, NAME RO_BFO, STATIC, LINK IOCARD_SW, DEVICE 7, INPUT 110
VAR 7152, NAME RO_SWITCH, STATIC, LINK IOCARD_SW, DEVICE 7, INPUT 111

VAR 7153, name RO_ENC_DW, STATIC, LINK IOCARD_ENCODER, DEVICE 7, Input 101, Aceleration 3,
Type 2
VAR 7154, name RO_ENC_UP, STATIC
VAR 7314, name RO_ENC_DC, STATIC, LINK IOCARD_ENCODER, DEVICE 7, Input 99, Aceleration 3, Type
2
{
&RO_ENC_UP = &RO_ENC_DC * -1
}
//RADIO OUTPUTS

VAR 7155, NAME RO_ACTIVE_1, STATIC, LINK IOCARD_DISPLAY, Device 7, Digit 64, Numbers 6
{
IF &RO_ACTIVE_1 = -1
{
&RO_ACTIVE_1 = -999999
&RC_DOT11 = 0
&RC_DOT21 = 0
}
ELSE
{
IF &RO_ACTIVE_1 > 999999
{
&RC_DOT21 = 0
&RC_DOT11 = 1
}
ELSE
{
&RC_DOT21 = 1
IF &RO_ACTIVE_1 > 0
{
&RC_DOT11 = 0
}
}
}
}
VAR 7161, NAME RO_CRS_1, STATIC, LINK IOCARD_DISPLAY, Device 7, Digit 70, Numbers 6
{
IF &RO_CRS_1 = -1
{
&RO_CRS_1 = -999999
&RC_DOT11 = 0
&RC_DOT21 = 0
}
ELSE
{
IF &RO_CRS_1 > 999999
{
&RC_DOT21 = 1
&RC_DOT11 = 0
}
ELSE
{
&RC_DOT21 = 1
IF &RO_CRS_1 > 0
{
&RC_DOT11 = 0
}
}
}
}
VAR 7167, NAME RO_VHF1_L, STATIC, LINK IOCARD_OUT, DEVICE 7, OUTPUT 75
VAR 7168, NAME RO_VHF2_L, STATIC, LINK IOCARD_OUT, DEVICE 7, OUTPUT 76
VAR 7169, NAME RO_SEL, STATIC, LINK IOCARD_OUT, DEVICE 7, OUTPUT 77
VAR 7170, NAME RO_NAV_L, STATIC, LINK IOCARD_OUT, DEVICE 7, OUTPUT 78
VAR 7171, NAME RO_VOR_L, STATIC, LINK IOCARD_OUT, DEVICE 7, OUTPUT 79
VAR 7172, NAME RO_ILS_L, STATIC, LINK IOCARD_OUT, DEVICE 7, OUTPUT 80
VAR 7173, NAME RO_ADF_L, STATIC, LINK IOCARD_OUT, DEVICE 7, OUTPUT 81
VAR 7174, NAME RO_BFO_L, STATIC, LINK IOCARD_OUT, DEVICE 7, OUTPUT 82
VAR 7306, NAME RC_DOT11, STATIC, LINK IOCARD_OUT, DEVICE 7, OUTPUT 83
VAR 7307, NAME RC_DOT21, STATIC, LINK IOCARD_OUT, DEVICE 7, OUTPUT 84

```


//RUDDER & PB INPUTS

```
VAR 7177, NAME RT_RESET, STATIC, LINK IOCARD_SW, DEVICE 7, INPUT 139
VAR 7178, NAME RT_NOSEL, STATIC, LINK IOCARD_SW, DEVICE 7, INPUT 141
VAR 7179, NAME RT_NOSER, STATIC, LINK IOCARD_SW, DEVICE 7, INPUT 142
VAR 7180, NAME PB_PB, STATIC, LINK IOCARD_SW, DEVICE 7, INPUT 140
```

//RUDDER & PB OUTPUTS

```
VAR 7181, NAME RT_DISPLAY_1, STATIC, LINK IOCARD_DISPLAY, Device 7, Digit 84, Numbers 3
VAR 7184, NAME RT_DISPLAY_4, STATIC, LINK IOCARD_DISPLAY, Device 7, Digit 87, Numbers 1
VAR 7300, NAME RT_STATUS, STATIC, VALUE 0
```

```
{
CALL &SETRUD
}
VAR 7301, NAME RT_VALUE, STATIC
{
CALL &SETRUD
}
VAR 7302, NAME SETRUD, STATIC, LINK SUBROUTINE
{
IF &RT_STATUS = 0
{
&RT_DISPLAY_1 = -999999
&RT_DISPLAY_4 = -999999
}
ELSE
{
IF &RT_VALUE > 0
{
&RT_DISPLAY_4 = -999995
&RT_DISPLAY_1 = &RT_VALUE * 10
}
ELSE
{
&RT_DISPLAY_4 = -999997
&RT_DISPLAY_1 = &RT_VALUE * (-10)
}
}
}
}
```

//AUDIO INPUTS

```
VAR 7185, NAME FO_AP_TB1, STATIC, LINK IOCARD_SW, DEVICE 7, INPUT 72
VAR 7186, NAME FO_AP_TB2, STATIC, LINK IOCARD_SW, DEVICE 7, INPUT 73
VAR 7187, NAME FO_AP_TB3, STATIC, LINK IOCARD_SW, DEVICE 7, INPUT 74
VAR 7188, NAME FO_AP_TB4, STATIC, LINK IOCARD_SW, DEVICE 7, INPUT 75
VAR 7189, NAME FO_AP_TB5, STATIC, LINK IOCARD_SW, DEVICE 7, INPUT 76
VAR 7190, NAME FO_AP_TB6, STATIC, LINK IOCARD_SW, DEVICE 7, INPUT 77
VAR 7191, NAME FO_AP_TB7, STATIC, LINK IOCARD_SW, DEVICE 7, INPUT 78

VAR 7192, NAME FO_AP_RK1, STATIC, LINK IOCARD_SW, DEVICE 7, INPUT 82
VAR 7193, NAME FO_AP_RK2, STATIC, LINK IOCARD_SW, DEVICE 7, INPUT 83
VAR 7194, NAME FO_AP_RK3, STATIC, LINK IOCARD_SW, DEVICE 7, INPUT 84
VAR 7195, NAME FO_AP_RK4, STATIC, LINK IOCARD_SW, DEVICE 7, INPUT 85
VAR 7196, NAME FO_AP_RK5, STATIC, LINK IOCARD_SW, DEVICE 7, INPUT 86
VAR 7197, NAME FO_AP_RK6, STATIC, LINK IOCARD_SW, DEVICE 7, INPUT 87
VAR 7198, NAME FO_AP_RK7, STATIC, LINK IOCARD_SW, DEVICE 7, INPUT 88
VAR 7199, NAME FO_AP_INT, STATIC, LINK IOCARD_SW, DEVICE 7, INPUT 97
VAR 7200, NAME FO_AP_RAD, STATIC, LINK IOCARD_SW, DEVICE 7, INPUT 98
VAR 7201, NAME FO_AP_ONCE, STATIC, LINK IOCARD_SW, DEVICE 7, INPUT 79
VAR 7202, NAME FO_AP_RESET, STATIC, LINK IOCARD_SW, DEVICE 7, INPUT 81
VAR 7203, NAME FO_AP_RK8, STATIC, LINK IOCARD_SW, DEVICE 7, INPUT 89
VAR 7204, NAME FO_AP_PA, STATIC, LINK IOCARD_SW, DEVICE 7, INPUT 80

VAR 7205, NAME FO_AP_RK9, STATIC, LINK IOCARD_SW, DEVICE 7, INPUT 90
VAR 7206, NAME FO_AP_RK10, STATIC, LINK IOCARD_SW, DEVICE 7, INPUT 91
VAR 7207, NAME FO_AP_RK11, STATIC, LINK IOCARD_SW, DEVICE 7, INPUT 92
VAR 7208, NAME FO_AP_RK12, STATIC, LINK IOCARD_SW, DEVICE 7, INPUT 93
VAR 7209, NAME FO_AP_RK13, STATIC, LINK IOCARD_SW, DEVICE 7, INPUT 94
VAR 7210, NAME FO_AP_RK14, STATIC, LINK IOCARD_SW, DEVICE 7, INPUT 95
VAR 7211, NAME FO_AP_RK15, STATIC, LINK IOCARD_SW, DEVICE 7, INPUT 96
```

//AUDIO OUTPUTS

VAR 7212, NAME FO_AP_TB1_UP, STATIC, LINK IOCARD_OUT, Device 7, OUTPUT 87
VAR 7213, NAME FO_AP_TB1_DW, STATIC, LINK IOCARD_OUT, Device 7, OUTPUT 96
VAR 7214, NAME FO_AP_TB2_UP, STATIC, LINK IOCARD_OUT, Device 7, OUTPUT 88
VAR 7215, NAME FO_AP_TB2_DW, STATIC, LINK IOCARD_OUT, Device 7, OUTPUT 97
VAR 7216, NAME FO_AP_TB3_UP, STATIC, LINK IOCARD_OUT, Device 7, OUTPUT 89
VAR 7217, NAME FO_AP_TB3_DW, STATIC, LINK IOCARD_OUT, Device 7, OUTPUT 98
VAR 7218, NAME FO_AP_TB4_UP, STATIC, LINK IOCARD_OUT, Device 7, OUTPUT 90
VAR 7219, NAME FO_AP_TB4_DW, STATIC, LINK IOCARD_OUT, Device 7, OUTPUT 99
VAR 7220, NAME FO_AP_TB5_UP, STATIC, LINK IOCARD_OUT, Device 7, OUTPUT 91
VAR 7221, NAME FO_AP_TB5_DW, STATIC, LINK IOCARD_OUT, Device 7, OUTPUT 100
VAR 7222, NAME FO_AP_TB6_UP, STATIC, LINK IOCARD_OUT, Device 7, OUTPUT 92
VAR 7223, NAME FO_AP_TB6_DW, STATIC, LINK IOCARD_OUT, Device 7, OUTPUT 101
VAR 7224, NAME FO_AP_TB7_UP, STATIC, LINK IOCARD_OUT, Device 7, OUTPUT 93
VAR 7225, NAME FO_AP_TB7_DW, STATIC, LINK IOCARD_OUT, Device 7, OUTPUT 102

VAR 7226, NAME FO_AP_RK1_L, STATIC, LINK IOCARD_OUT, Device 7, OUTPUT 103
VAR 7227, NAME FO_AP_RK2_L, STATIC, LINK IOCARD_OUT, Device 7, OUTPUT 104
VAR 7228, NAME FO_AP_RK3_L, STATIC, LINK IOCARD_OUT, Device 7, OUTPUT 105
VAR 7229, NAME FO_AP_RK4_L, STATIC, LINK IOCARD_OUT, Device 7, OUTPUT 106
VAR 7230, NAME FO_AP_RK5_L, STATIC, LINK IOCARD_OUT, Device 7, OUTPUT 107
VAR 7231, NAME FO_AP_RK6_L, STATIC, LINK IOCARD_OUT, Device 7, OUTPUT 108
VAR 7232, NAME FO_AP_RK7_L, STATIC, LINK IOCARD_OUT, Device 7, OUTPUT 109

VAR 7233, NAME FO_AP_ONCE_L, STATIC, LINK IOCARD_OUT, Device 7, OUTPUT 94
VAR 7234, NAME FO_AP_PA_L, STATIC, LINK IOCARD_OUT, Device 7, OUTPUT 110
VAR 7235, NAME FO_AP_RK8_L, STATIC, LINK IOCARD_OUT, Device 7, OUTPUT 95

VAR 7236, NAME FO_AP_RK9_L, STATIC, LINK IOCARD_OUT, Device 7, OUTPUT 111
VAR 7237, NAME FO_AP_RK10_L, STATIC, LINK IOCARD_OUT, Device 7, OUTPUT 112
VAR 7238, NAME FO_AP_RK11_L, STATIC, LINK IOCARD_OUT, Device 7, OUTPUT 113
VAR 7239, NAME FO_AP_RK12_L, STATIC, LINK IOCARD_OUT, Device 7, OUTPUT 114
VAR 7240, NAME FO_AP_RK13_L, STATIC, LINK IOCARD_OUT, Device 7, OUTPUT 115
VAR 7241, NAME FO_AP_RK14_L, STATIC, LINK IOCARD_OUT, Device 7, OUTPUT 116
VAR 7242, NAME FO_AP_RK15_L, STATIC, LINK IOCARD_OUT, Device 7, OUTPUT 117

//ATC INPUTS

VAR 7243, NAME ATC_ROT1_1, STATIC, LINK IOCARD_SW, DEVICE 7, INPUT 137
VAR 7244, NAME ATC_ROT1_2, STATIC, LINK IOCARD_SW, DEVICE 7, INPUT 136
VAR 7245, NAME ATC_ROT1_3, STATIC, LINK IOCARD_SW, DEVICE 7, INPUT 135
VAR 7246, NAME ATC_ROT2_1, STATIC, LINK IOCARD_SW, DEVICE 7, INPUT 134
VAR 7247, NAME ATC_ROT3_1, STATIC, LINK IOCARD_SW, DEVICE 7, INPUT 138
VAR 7248, NAME ATC_ROT4_1, STATIC, LINK IOCARD_SW, DEVICE 7, INPUT 130
VAR 7249, NAME ATC_ROT4_2, STATIC, LINK IOCARD_SW, DEVICE 7, INPUT 131
VAR 7250, NAME ATC_ROT4_3, STATIC, LINK IOCARD_SW, DEVICE 7, INPUT 132
VAR 7251, NAME ATC_ROT4_4, STATIC, LINK IOCARD_SW, DEVICE 7, INPUT 133
VAR 7252, NAME ATC_ROT5_1, STATIC, LINK IOCARD_SW, DEVICE 7, INPUT 129
VAR 7253, NAME ATC_ROT5_2, STATIC, LINK IOCARD_SW, DEVICE 7, INPUT 128
VAR 7254, NAME ATC_ROT5_3, STATIC, LINK IOCARD_SW, DEVICE 7, INPUT 127

VAR 7255, NAME ATC_IDENT, STATIC, LINK IOCARD_SW, DEVICE 7, INPUT 125
VAR 7256, NAME ATC_KB1, STATIC, LINK IOCARD_SW, DEVICE 7, INPUT 118
VAR 7257, NAME ATC_KB2, STATIC, LINK IOCARD_SW, DEVICE 7, INPUT 119
VAR 7258, NAME ATC_KB3, STATIC, LINK IOCARD_SW, DEVICE 7, INPUT 120
VAR 7259, NAME ATC_KB4, STATIC, LINK IOCARD_SW, DEVICE 7, INPUT 121
VAR 7260, NAME ATC_KB5, STATIC, LINK IOCARD_SW, DEVICE 7, INPUT 122
VAR 7261, NAME ATC_KB6, STATIC, LINK IOCARD_SW, DEVICE 7, INPUT 123
VAR 7262, NAME ATC_KB7, STATIC, LINK IOCARD_SW, DEVICE 7, INPUT 124
VAR 7263, NAME ATC_KB8, STATIC, LINK IOCARD_SW, DEVICE 7, INPUT 125
VAR 7264, NAME ATC_KB9, STATIC, LINK IOCARD_SW, DEVICE 7, INPUT 126

//ATC OUTPUTS

VAR 7265, NAME ATC_FAIL, STATIC, LINK IOCARD_OUT, Device 7, OUTPUT 85
VAR 7266, NAME ATC_DIGIT_1, STATIC, LINK IOCARD_DISPLAY, Device 7, Digit 80, Numbers 4
{
IF &ATC_DIGIT_1 = -1
{
&ATC_DIGIT_1 = -999999
}
}

```

//MASTER CARD 3

//FLOOD INPUTS

VAR 7270, NAME FLOOD_AIDS, STATIC, LINK IOCARD_SW, DEVICE 7, INPUT 157
VAR 7271, NAME ATC_DFDR, STATIC, LINK IOCARD_SW, DEVICE 7, INPUT 158

//RADAR INPUTS

VAR 7272, NAME RD_SYS_ON, STATIC, LINK IOCARD_SW, DEVICE 7, INPUT 144
VAR 7273, NAME RD_SYS_OFF, STATIC, LINK IOCARD_SW, DEVICE 7, INPUT 145

VAR 7274, NAME RD_PWS_OFF, STATIC, LINK IOCARD_SW, DEVICE 7, INPUT 147
VAR 7275, NAME RD_PWS_AUTO, STATIC, LINK IOCARD_SW, DEVICE 7, INPUT 146

VAR 7276, NAME RD_GND_OFF, STATIC, LINK IOCARD_SW, DEVICE 7, INPUT 149
VAR 7277, NAME RD_GND_ON, STATIC, LINK IOCARD_SW, DEVICE 7, INPUT 148

VAR 7278, NAME RD_WX, STATIC, LINK IOCARD_SW, DEVICE 7, INPUT 153
VAR 7279, NAME RD_WXT, STATIC, LINK IOCARD_SW, DEVICE 7, INPUT 154
VAR 7280, NAME RD_TURB, STATIC, LINK IOCARD_SW, DEVICE 7, INPUT 155
VAR 7281, NAME RD_MAP, STATIC, LINK IOCARD_SW, DEVICE 7, INPUT 156

//-----
//          TQ A320 PROSIM SCRIPT CODE          -
//-----
//
//-----
//--DEVICE NUMBER INFO:                         -
//-----
// TQ -> Device 8
//-----

Var 8001, name Servo1, Link IOCARD_SERVO, DEVICE 8, Output 1, PosL 0, PosC 512, PosR 1023
Var 8002, name Servo2, Link IOCARD_SERVO, DEVICE 8, Output 2, PosL 0, PosC 512, PosR 1023
Var 8003, name Servo3, Link IOCARD_SERVO, DEVICE 8, Output 3, PosL 0, PosC 512, PosR 1023
Var 8004, name Servo4, Link IOCARD_SERVO, DEVICE 8, Output 4, PosL 0, PosC 512, PosR 1023
Var 8005, name Motor1, STATIC, Link IOCARD_MOTOR, DEVICE 8, Output 0, Aceleration 0
Var 8006, name Motor2, STATIC, Link IOCARD_MOTOR, DEVICE 8, Output 1, Aceleration 0
Var 8007, name Motor3, STATIC, Link IOCARD_MOTOR, DEVICE 8, Output 2, Aceleration 0
Var 8008, name Motor4, STATIC, Link IOCARD_MOTOR, DEVICE 8, Output 3, Aceleration 0
Var 8009, name output1, Link IOCARD_OUT, DEVICE 8, Output 0
Var 8010, name output2, Link IOCARD_OUT, DEVICE 8, Output 1
Var 8011, name output3, Link IOCARD_OUT, DEVICE 8, Output 2
Var 8012, name output4, Link IOCARD_OUT, DEVICE 8, Output 3
Var 8013, name output5, Link IOCARD_OUT, DEVICE 8, Output 4
Var 8014, name output6, Link IOCARD_OUT, DEVICE 8, Output 5
Var 8015, name output7, Link IOCARD_OUT, DEVICE 8, Output 6
Var 8016, name output8, Link IOCARD_OUT, DEVICE 8, Output 7
Var 8017, name autopos1A, Link IOCARD_CONFIG, DEVICE 8, Output 1
Var 8018, name autopos1B, Link IOCARD_CONFIG, DEVICE 8, Output 2
Var 8019, name autopos2A, Link IOCARD_CONFIG, DEVICE 8, Output 3
Var 8020, name autopos2B, Link IOCARD_CONFIG, DEVICE 8, Output 4
Var 8021, name autopos3A, Link IOCARD_CONFIG, DEVICE 8, Output 5

```

```

Var 8022, name autopos3B, Link IOCARD_CONFIG, DEVICE 8, Output 6
Var 8023, name input1, STATIC, Link IOCARD_SW, DEVICE 8, Input 0
Var 8024, name input2, STATIC, Link IOCARD_SW, DEVICE 8, Input 1
Var 8025, name input3, STATIC, Link IOCARD_SW, DEVICE 8, Input 2
Var 8026, name input4, STATIC, Link IOCARD_SW, DEVICE 8, Input 3
Var 8027, name input5, STATIC, Link IOCARD_SW, DEVICE 8, Input 4
Var 8028, name input6, STATIC, Link IOCARD_SW, DEVICE 8, Input 5
Var 8029, name input7, STATIC, Link IOCARD_SW, DEVICE 8, Input 6
Var 8030, name input8, STATIC, Link IOCARD_SW, DEVICE 8, Input 7
Var 8031, name input9, STATIC, Link IOCARD_SW, DEVICE 8, Input 9
Var 8032, name input10, STATIC, Link IOCARD_SW, DEVICE 8, Input 10

Var 8033, name analog1, STATIC, Link IOCARD_ANALOGIC, DEVICE 8, Input 1, PosL 0, PosC 128,
PosR 255
{
  IF &ATACTIVO = 1
  {
    L0 = &ANALOG1 - &OBJETIVO
    L2 = ABS L0
    L1 = 100
    IF L2 > 1
    {
      IF L2 < 8
      {
        L1 = 100
      }
      IF L0 > 0
      {
        &MOTOR1 = L1
      }
      ELSE
      {
        &MOTOR1 = 128 + L1
      }
    }
    ELSE
    {
      &MOTOR1 = 128
    }
  }
}

Var 8034, name analog2, STATIC, Link IOCARD_ANALOGIC, DEVICE 8, Input 2, PosL 0, PosC 128,
PosR 255

Var 8035, name analog3, STATIC, Link IOCARD_ANALOGIC, DEVICE 8, Input 3, PosL 0, PosC 128,
PosR 255

Var 8036, name analog4, STATIC, Link IOCARD_ANALOGIC, DEVICE 8, Input 4, PosL 0, PosC 128,
PosR 255

Var 8037, name analog5, STATIC, Link IOCARD_ANALOGIC, DEVICE 8, Input 5, PosL 0, PosC 128,
PosR 255

Var 8038, name analog6, STATIC, Link IOCARD_ANALOGIC, DEVICE 8, Input 6, PosL 0, PosC 128,
PosR 255

Var 8039, name analog7, STATIC, Link IOCARD_ANALOGIC, DEVICE 8, Input 7, PosL 0, PosC 128,
PosR 255

Var 8040, name analog8, STATIC, Link IOCARD_ANALOGIC, DEVICE 8, Input 8, PosL 0, PosC 128,
PosR 255

Var 8041, name objetivo, STATIC

```

```

{
  IF &ATACTIVO = 1
  {
    L0 = &ANALOG1 - &OBJETIVO
    L2 = ABS L0
    L1 = 100
    IF L2 > 1
    {
      IF L2 < 8
      {
        L1 = 100
      }
      IF L0 > 0
      {
        &MOTOR1 = L1
      }
      ELSE
      {
        &MOTOR1 = 128 + L1
      }
    }
    ELSE
    {
      &MOTOR1 = 128
    }
  }
  ELSE
  {
    &MOTOR1 = 128
  }
}

```

```

Var 8042, name ATACTIVO, value 1, STATIC
{
  IF &ATACTIVO = 1
  {
    &ANALOG1 = 0
  }
  ELSE
  {
    &MOTOR1 = 128
  }
}

```

```

Var 8043, name ProSimObjetivo, STATIC
{
  L0 = &ProSimObjetivo / 5.91
  &objetivo = L0 + 80
}

```

```

Var 8044, name EleTrimDN, STATIC
Var 8045, name EleTrimPN, STATIC
Var 8046, name EleTrimUN, STATIC
Var 8047, name EleTrimP, STATIC
var 8048, name EleTrimMP, STATIC
var 8049, name EleTrimOUT, STATIC
var 8050, name SteeperMotor, STATIC
var 8051, name FlapMotor, STATIC
var 8052, name TQout1, STATIC
var 8053, name TQout2, STATIC

```

```

//-----
//-                MCDU CAP A320 PROSIM SCRIPT CODE                -
//-----
//
//-----
//--DEVICE NUMBER INFO:                                          -
//-----
// MCDU -> Device 13
//-----

```

```

Var 1350, name CDUKey, STATIC, Link IOCARD_KEYS, device 13
// Keyboard reading
Var 1351, name CDUExec, STATIC, Link IOCARD_OUT, device 13, Output 2
// EXEC LED
Var 1352, name CDUFail, STATIC, Link IOCARD_OUT, device 13, Output 4

```

```
// FAIL LED
Var 1353, name CDUMSG, STATIC, Link IOCARD_OUT, device 13, Output 1
// MSG LED

//-----
//-                MCDU FO A320 PROSIM SCRIPT CODE                -
//-----
//
//-----
//--DEVICE NUMBER INFO:                                          -
//-----
// MCDU -> Device 14
//-----

Var 1354, name CDUKeyFO, STATIC, Link IOCARD_KEYS, device 14
// Keyboard reading
Var 1355, name CDUExecFO, STATIC, Link IOCARD_OUT, device 14, Output 2
// EXEC LED
Var 1356, name CDUFailFO, STATIC, Link IOCARD_OUT, device 14, Output 4
// FAIL LED
Var 1357, name CDUMSGFO, STATIC, Link IOCARD_OUT, device 14, Output 1
```