



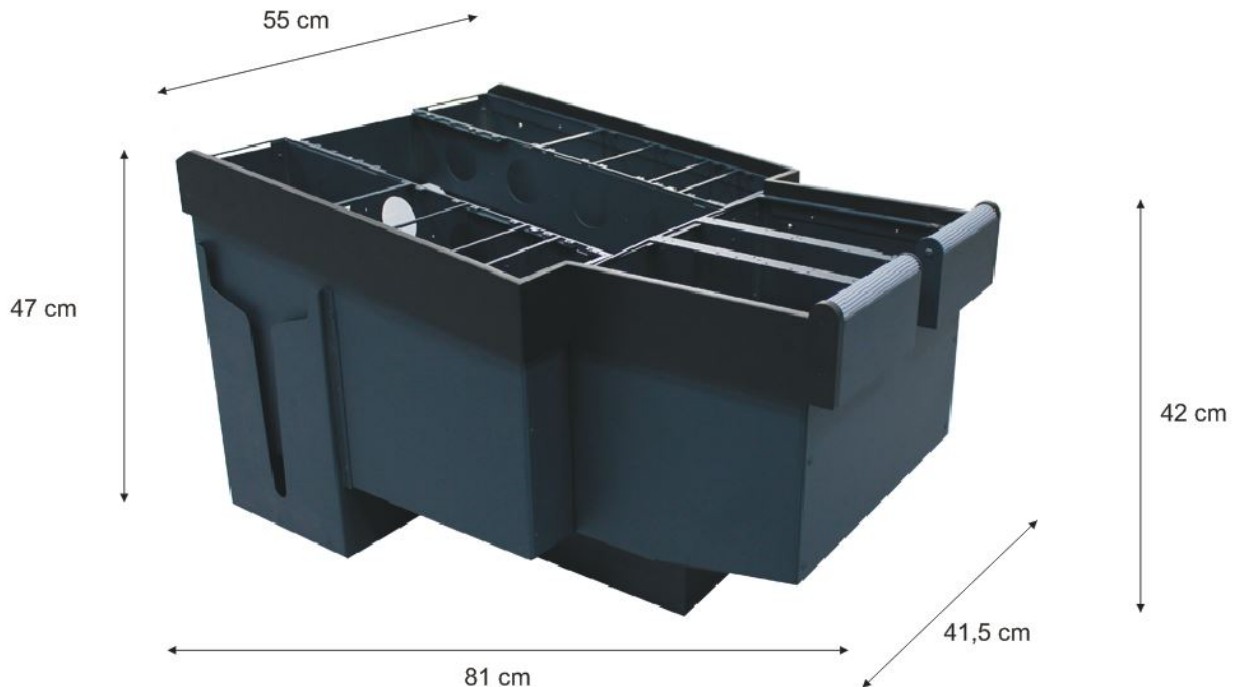
Pedestal light Airbus A320  
*Airbus A320 Pedestal light*

## Datos técnicos:

### *Technical data:*

Las medidas del hardware (ancho x alto x profundidad) son: 55 x 47 x 81 cm.

*The measurements of the hardware (width x height x depth) are: 55 x 47 x 81 cm.*



## Datos de Configuración:

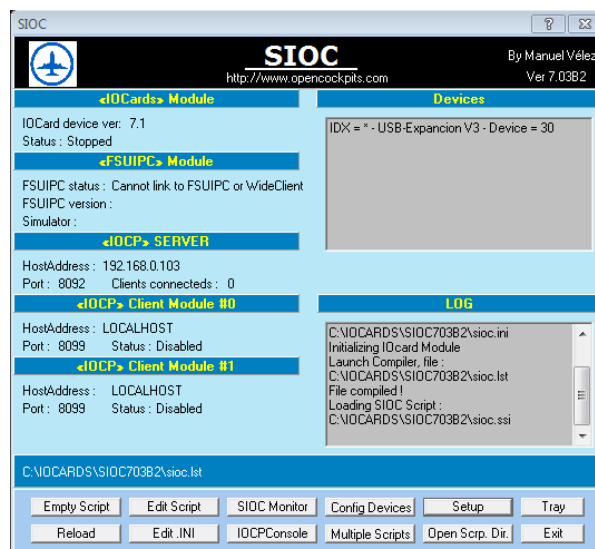
### *Configuration data:*

\* Conectar el hardware a través de los cables USB al puerto correspondiente del ordenador.

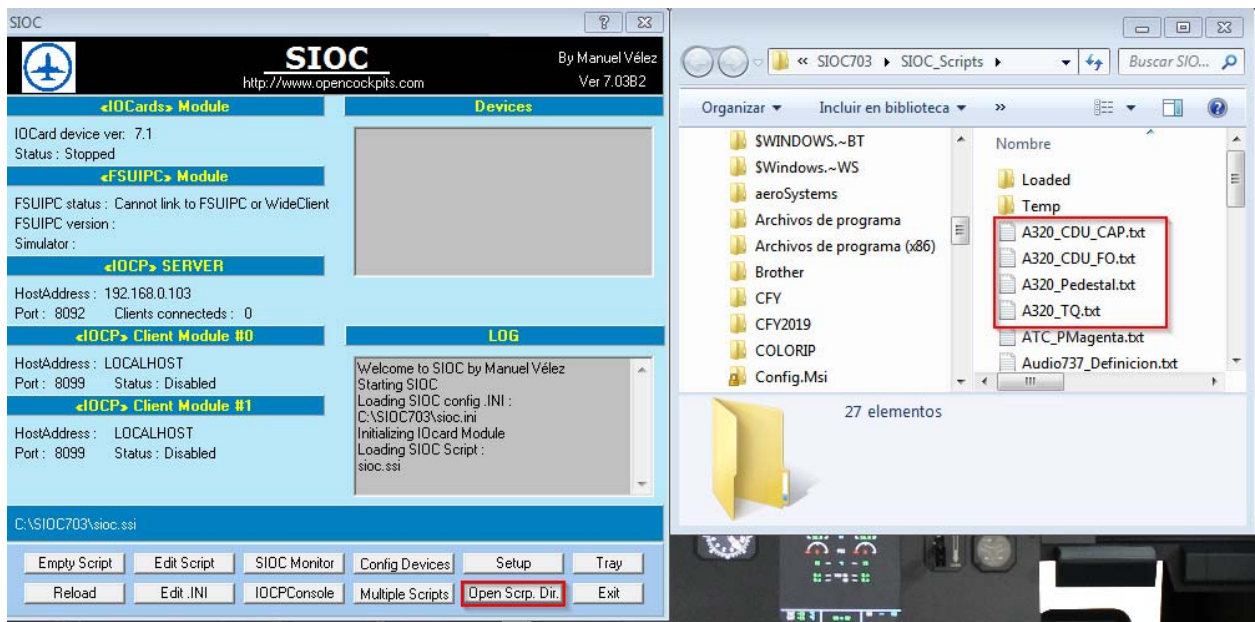
*Connect the hardware through the USB cables to the computer.*

\* Ejecutar o instalar SIOC ([https://www.opencockpits.com/catalog/info/information.php?info\\_id=45&language=es](https://www.opencockpits.com/catalog/info/information.php?info_id=45&language=es))

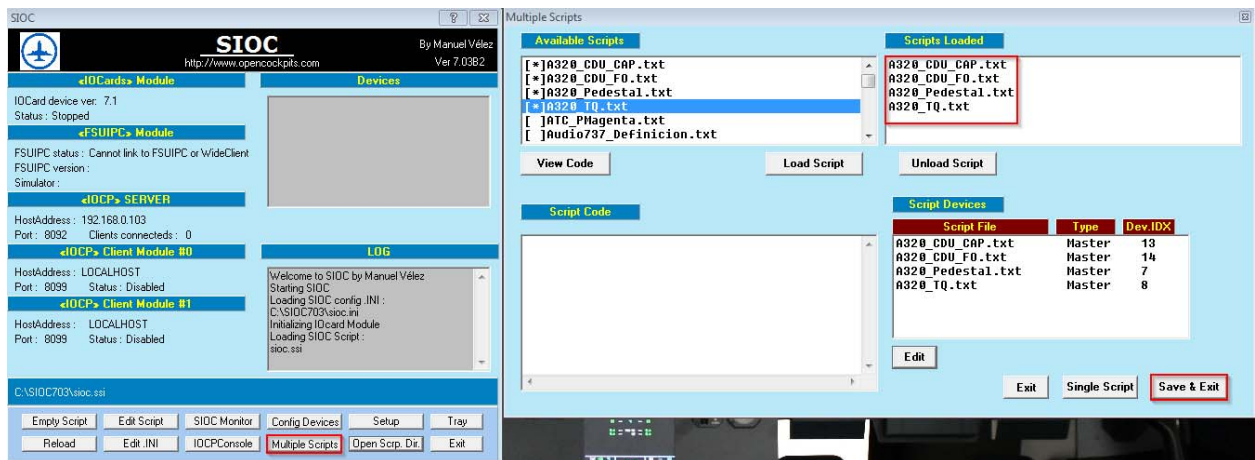
*Install or exec SIOC software.*



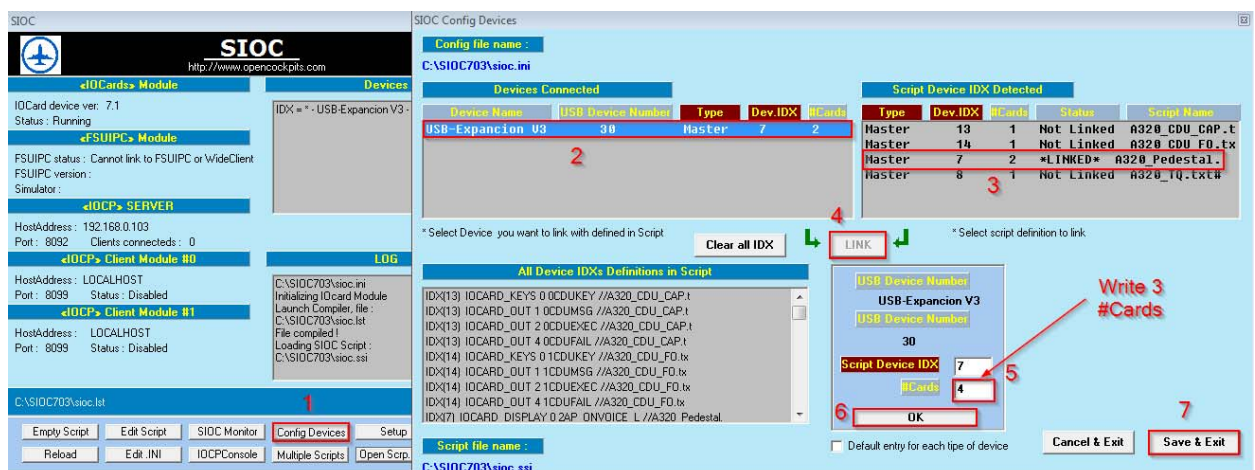
\* Copiar el código script en el directorio de scripts de SIOC (Pedestal, ambos MCDU).  
*Copy the script code in the SIOC script directory (Pedestal, both MCDU).*



\* Cargar el código script en SIOC.  
*Load the script code in SIOC.*



\* Configurar el dispositivo (Repetir el proceso con cada dispositivo).  
*Configure the device (Repeat the steps with each dispositive).*



\* Configurar el hardware en su Addons favorita.  
*Configure the hardware in your favorite Addons.*

### **Precaución:**

#### ***Caution:***

\* Montar y fijar adecuadamente el hardware.  
*Mount and fix the hardware properly.*

\* Hardware comprobado para funcionar a la tensión de entrada de 3,2V, 5V (Master Card) y 12V (ledstrip)

*\* Hardware tested to operate at the voltage of 3,2V 5V (Master Card) and 12V (ledstrip)*

### **Declaración de entradas y salidas:**

#### ***I/O declaration:***

```
//-----  
//-                PEDESTAL A320 PROSIM SCRIPT CODE                -  
//-----  
//  
//-----  
//--DEVICE NUMBER INFO:                                          -  
//-----  
// PEDESTAL:  
// Master n.1 -> Device 7.                                         -  
// Master n.2 -> Device 7.                                         -  
// Master n.3 -> Device 7.                                         -  
//-----  
  
//PEDESTAL SIDE L  
  
//ECAM INPUTS  
  
VAR 7001, NAME ECAM_TO, STATIC, LINK IOCARD_SW, DEVICE 7, INPUT 71  
VAR 7002, NAME ECAM_EMER, STATIC, LINK IOCARD_SW, DEVICE 7, INPUT 70  
  
VAR 7003, NAME ECAM_ENG, STATIC, LINK IOCARD_SW, DEVICE 7, INPUT 54  
VAR 7004, NAME ECAM_BLEED, STATIC, LINK IOCARD_SW, DEVICE 7, INPUT 55  
VAR 7005, NAME ECAM_PRESS, STATIC, LINK IOCARD_SW, DEVICE 7, INPUT 56  
VAR 7006, NAME ECAM_ELEC, STATIC, LINK IOCARD_SW, DEVICE 7, INPUT 57  
VAR 7007, NAME ECAM_HYD, STATIC, LINK IOCARD_SW, DEVICE 7, INPUT 58  
VAR 7008, NAME ECAM_FUEL, STATIC, LINK IOCARD_SW, DEVICE 7, INPUT 59  
  
VAR 7009, NAME ECAM_APU, STATIC, LINK IOCARD_SW, DEVICE 7, INPUT 60  
VAR 7010, NAME ECAM_COND, STATIC, LINK IOCARD_SW, DEVICE 7, INPUT 61  
VAR 7011, NAME ECAM_DOOR, STATIC, LINK IOCARD_SW, DEVICE 7, INPUT 62  
VAR 7012, NAME ECAM_WHEEL, STATIC, LINK IOCARD_SW, DEVICE 7, INPUT 63  
VAR 7013, NAME ECAM_FCTL, STATIC, LINK IOCARD_SW, DEVICE 7, INPUT 64  
VAR 7014, NAME ECAM_ALL, STATIC, LINK IOCARD_SW, DEVICE 7, INPUT 69  
  
VAR 7015, NAME ECAM_CLR, STATIC, LINK IOCARD_SW, DEVICE 7, INPUT 65  
VAR 7016, NAME ECAM_STS, STATIC, LINK IOCARD_SW, DEVICE 7, INPUT 66  
VAR 7017, NAME ECAM_RCL, STATIC, LINK IOCARD_SW, DEVICE 7, INPUT 68  
VAR 7018, NAME ECAM_RCLR, STATIC, LINK IOCARD_SW, DEVICE 7, INPUT 67  
  
//ECAM OUTPUTS  
  
VAR 7019, NAME ECAM_O_ENG, STATIC, LINK IOCARD_OUT, DEVICE 7, OUTPUT 27  
VAR 7020, NAME ECAM_O_BLEED, STATIC, LINK IOCARD_OUT, DEVICE 7, OUTPUT 28  
VAR 7021, NAME ECAM_O_PRESS, STATIC, LINK IOCARD_OUT, DEVICE 7, OUTPUT 29  
VAR 7022, NAME ECAM_O_ELEC, STATIC, LINK IOCARD_OUT, DEVICE 7, OUTPUT 30  
VAR 7023, NAME ECAM_O_HYD, STATIC, LINK IOCARD_OUT, DEVICE 7, OUTPUT 31  
VAR 7024, NAME ECAM_O_FUEL, STATIC, LINK IOCARD_OUT, DEVICE 7, OUTPUT 32  
  
VAR 7025, NAME ECAM_O_APU, STATIC, LINK IOCARD_OUT, DEVICE 7, OUTPUT 33  
VAR 7026, NAME ECAM_O_COND, STATIC, LINK IOCARD_OUT, DEVICE 7, OUTPUT 34  
VAR 7027, NAME ECAM_O_DOOR, STATIC, LINK IOCARD_OUT, DEVICE 7, OUTPUT 35  
VAR 7028, NAME ECAM_O_WHEEL, STATIC, LINK IOCARD_OUT, DEVICE 7, OUTPUT 36
```

```
VAR 7029, NAME ECAM_O_FCTL, STATIC, LINK IOCARD_OUT, DEVICE 7, OUTPUT 37

VAR 7030, NAME ECAM_O_CLR, STATIC, LINK IOCARD_OUT, DEVICE 7, OUTPUT 38
VAR 7031, NAME ECAM_O_STS, STATIC, LINK IOCARD_OUT, DEVICE 7, OUTPUT 39
VAR 7032, NAME ECAM_O_RCLR, STATIC, LINK IOCARD_OUT, DEVICE 7, OUTPUT 40

//DOOR INPUTS

VAR 7033, NAME DOOR_UNLOCK, STATIC, LINK IOCARD_SW, DEVICE 7, INPUT 40
VAR 7034, NAME DOOR_LOCK, STATIC, LINK IOCARD_SW, DEVICE 7, INPUT 41

//DOOR OUTPUTS

VAR 7035, NAME DOOR_KORRY, STATIC, LINK IOCARD_OUT, DEVICE 7, OUTPUT 21

//SWITCHING INPUTS

VAR 7036, NAME SW_ATT_CAP, STATIC, LINK IOCARD_SW, DEVICE 7, INPUT 45
VAR 7037, NAME SW_ATT_NORM, STATIC, LINK IOCARD_SW, DEVICE 7, INPUT 46
VAR 7038, NAME SW_ATT_FO, STATIC, LINK IOCARD_SW, DEVICE 7, INPUT 47

VAR 7039, NAME SW_AD_CAP, STATIC, LINK IOCARD_SW, DEVICE 7, INPUT 48
VAR 7040, NAME SW_AD_NORM, STATIC, LINK IOCARD_SW, DEVICE 7, INPUT 49
VAR 7041, NAME SW_AD_FO, STATIC, LINK IOCARD_SW, DEVICE 7, INPUT 50

VAR 7042, NAME SW_DMC_CAP, STATIC, LINK IOCARD_SW, DEVICE 7, INPUT 51
VAR 7043, NAME SW_DMC_NORM, STATIC, LINK IOCARD_SW, DEVICE 7, INPUT 52
VAR 7044, NAME SW_DMC_FO, STATIC, LINK IOCARD_SW, DEVICE 7, INPUT 53

VAR 7045, NAME SW_XFR_CAP, STATIC, LINK IOCARD_SW, DEVICE 7, INPUT 42
VAR 7046, NAME SW_XFR_NORM, STATIC, LINK IOCARD_SW, DEVICE 7, INPUT 43
VAR 7047, NAME SW_XFR_FO, STATIC, LINK IOCARD_SW, DEVICE 7, INPUT 44

//ARRANQUE DE MOTORES INPUTS

VAR 7048, NAME ENG_M1, STATIC, LINK IOCARD_SW, DEVICE 7, INPUT 112
VAR 7049, NAME ENG_M2, STATIC, LINK IOCARD_SW, DEVICE 7, INPUT 113
VAR 7050, NAME ENG_CRACK, STATIC, LINK IOCARD_SW, DEVICE 7, INPUT 114
VAR 7051, NAME ENG_NORM, STATIC, LINK IOCARD_SW, DEVICE 7, INPUT 115
VAR 7052, NAME ENG_IGN, STATIC, LINK IOCARD_SW, DEVICE 7, INPUT 116

//ARRANQUE DE MOTORES OUPUTS

VAR 7053, NAME ENG_K1UP, STATIC, LINK IOCARD_OUT, DEVICE 7, OUTPUT 24
VAR 7054, NAME ENG_K1DW, STATIC, LINK IOCARD_OUT, DEVICE 7, OUTPUT 23

VAR 7055, NAME ENG_K2UP, STATIC, LINK IOCARD_OUT, DEVICE 7, OUTPUT 26
VAR 7056, NAME ENG_K2DW, STATIC, LINK IOCARD_OUT, DEVICE 7, OUTPUT 25

//AUDIO INPUTS

VAR 7057, NAME AP_TB1, STATIC, LINK IOCARD_SW, DEVICE 7, INPUT 0
VAR 7058, NAME AP_TB2, STATIC, LINK IOCARD_SW, DEVICE 7, INPUT 1
VAR 7059, NAME AP_TB3, STATIC, LINK IOCARD_SW, DEVICE 7, INPUT 2
VAR 7060, NAME AP_TB4, STATIC, LINK IOCARD_SW, DEVICE 7, INPUT 3
VAR 7061, NAME AP_TB5, STATIC, LINK IOCARD_SW, DEVICE 7, INPUT 4
VAR 7062, NAME AP_TB6, STATIC, LINK IOCARD_SW, DEVICE 7, INPUT 5
VAR 7063, NAME AP_TB7, STATIC, LINK IOCARD_SW, DEVICE 7, INPUT 6

VAR 7064, NAME AP_RK1, STATIC, LINK IOCARD_SW, DEVICE 7, INPUT 10
VAR 7065, NAME AP_RK2, STATIC, LINK IOCARD_SW, DEVICE 7, INPUT 11
VAR 7066, NAME AP_RK3, STATIC, LINK IOCARD_SW, DEVICE 7, INPUT 12
VAR 7067, NAME AP_RK4, STATIC, LINK IOCARD_SW, DEVICE 7, INPUT 13
VAR 7068, NAME AP_RK5, STATIC, LINK IOCARD_SW, DEVICE 7, INPUT 14
VAR 7069, NAME AP_RK6, STATIC, LINK IOCARD_SW, DEVICE 7, INPUT 15
VAR 7070, NAME AP_RK7, STATIC, LINK IOCARD_SW, DEVICE 7, INPUT 16

VAR 7071, NAME AP_INT, STATIC, LINK IOCARD_SW, DEVICE 7, INPUT 25
VAR 7072, NAME AP_RAD, STATIC, LINK IOCARD_SW, DEVICE 7, INPUT 26
VAR 7073, NAME AP_ONVOICE, STATIC, LINK IOCARD_SW, DEVICE 7, INPUT 7
VAR 7074, NAME AP_RESET, STATIC, LINK IOCARD_SW, DEVICE 7, INPUT 9
VAR 7075, NAME AP_RK8, STATIC, LINK IOCARD_SW, DEVICE 7, INPUT 17
VAR 7076, NAME AP_PA, STATIC, LINK IOCARD_SW, DEVICE 7, INPUT 8
```

```
VAR 7077, NAME AP_RK9, STATIC, LINK IOCARD_SW, DEVICE 7, INPUT 18
VAR 7078, NAME AP_RK10, STATIC, LINK IOCARD_SW, DEVICE 7, INPUT 19
VAR 7079, NAME AP_RK11, STATIC, LINK IOCARD_SW, DEVICE 7, INPUT 20
VAR 7080, NAME AP_RK12, STATIC, LINK IOCARD_SW, DEVICE 7, INPUT 21
VAR 7081, NAME AP_RK13, STATIC, LINK IOCARD_SW, DEVICE 7, INPUT 22
VAR 7082, NAME AP_RK14, STATIC, LINK IOCARD_SW, DEVICE 7, INPUT 23
VAR 7083, NAME AP_RK15, STATIC, LINK IOCARD_SW, DEVICE 7, INPUT 24
```

//AUDIO OUTPUTS

```
VAR 7084, NAME AP_TB1_UP, STATIC, LINK IOCARD_DISPLAY, Device 7, Digit 32, Numbers 1
VAR 7085, NAME AP_TB1_DW, STATIC, LINK IOCARD_DISPLAY, Device 7, Digit 41, Numbers 1
VAR 7086, NAME AP_TB2_UP, STATIC, LINK IOCARD_DISPLAY, Device 7, Digit 33, Numbers 1
VAR 7087, NAME AP_TB2_DW, STATIC, LINK IOCARD_DISPLAY, Device 7, Digit 42, Numbers 1
VAR 7088, NAME AP_TB3_UP, STATIC, LINK IOCARD_DISPLAY, Device 7, Digit 34, Numbers 1
VAR 7089, NAME AP_TB3_DW, STATIC, LINK IOCARD_DISPLAY, Device 7, Digit 43, Numbers 1
VAR 7090, NAME AP_TB4_UP, STATIC, LINK IOCARD_DISPLAY, Device 7, Digit 35, Numbers 1
VAR 7091, NAME AP_TB4_DW, STATIC, LINK IOCARD_DISPLAY, Device 7, Digit 44, Numbers 1
VAR 7092, NAME AP_TB5_UP, STATIC, LINK IOCARD_DISPLAY, Device 7, Digit 36, Numbers 1
VAR 7093, NAME AP_TB5_DW, STATIC, LINK IOCARD_DISPLAY, Device 7, Digit 45, Numbers 1
VAR 7094, NAME AP_TB6_UP, STATIC, LINK IOCARD_DISPLAY, Device 7, Digit 37, Numbers 1
VAR 7095, NAME AP_TB6_DW, STATIC, LINK IOCARD_DISPLAY, Device 7, Digit 46, Numbers 1
VAR 7096, NAME AP_TB7_UP, STATIC, LINK IOCARD_DISPLAY, Device 7, Digit 38, Numbers 1
VAR 7097, NAME AP_TB7_DW, STATIC, LINK IOCARD_DISPLAY, Device 7, Digit 47, Numbers 1
```

```
VAR 7098, NAME AP_RK1_L, STATIC, LINK IOCARD_DISPLAY, Device 7, Digit 48, Numbers 1
VAR 7099, NAME AP_RK2_L, STATIC, LINK IOCARD_DISPLAY, Device 7, Digit 49, Numbers 1
VAR 7100, NAME AP_RK3_L, STATIC, LINK IOCARD_DISPLAY, Device 7, Digit 50, Numbers 1
VAR 7101, NAME AP_RK4_L, STATIC, LINK IOCARD_DISPLAY, Device 7, Digit 51, Numbers 1
VAR 7102, NAME AP_RK5_L, STATIC, LINK IOCARD_DISPLAY, Device 7, Digit 52, Numbers 1
VAR 7103, NAME AP_RK6_L, STATIC, LINK IOCARD_DISPLAY, Device 7, Digit 53, Numbers 1
VAR 7104, NAME AP_RK7_L, STATIC, LINK IOCARD_DISPLAY, Device 7, Digit 54, Numbers 1
```

```
VAR 7105, NAME AP_ONVOICE_L, STATIC, LINK IOCARD_DISPLAY, Device 7, Digit 39, Numbers 1
VAR 7106, NAME AP_PA_L, STATIC, LINK IOCARD_DISPLAY, Device 7, Digit 55, Numbers 1
VAR 7107, NAME AP_RK8_L, STATIC, LINK IOCARD_DISPLAY, Device 7, Digit 40, Numbers 1
```

```
VAR 7108, NAME AP_RK9_L, STATIC, LINK IOCARD_DISPLAY, Device 7, Digit 56, Numbers 1
VAR 7109, NAME AP_RK10_L, STATIC, LINK IOCARD_DISPLAY, Device 7, Digit 57, Numbers 1
VAR 7110, NAME AP_RK11_L, STATIC, LINK IOCARD_DISPLAY, Device 7, Digit 58, Numbers 1
VAR 7111, NAME AP_RK12_L, STATIC, LINK IOCARD_DISPLAY, Device 7, Digit 59, Numbers 1
VAR 7112, NAME AP_RK13_L, STATIC, LINK IOCARD_DISPLAY, Device 7, Digit 60, Numbers 1
VAR 7113, NAME AP_RK14_L, STATIC, LINK IOCARD_DISPLAY, Device 7, Digit 61, Numbers 1
VAR 7114, NAME AP_RK15_L, STATIC, LINK IOCARD_DISPLAY, Device 7, Digit 62, Numbers 1
```

//RADIO INPUTS

```
VAR 7175, NAME RC_CHANGE, STATIC, LINK IOCARD_SW, DEVICE 7, INPUT 31
VAR 7115, NAME RC_VHF1, STATIC, LINK IOCARD_SW, DEVICE 7, INPUT 32
VAR 7116, NAME RC_VHF2, STATIC, LINK IOCARD_SW, DEVICE 7, INPUT 33
VAR 7117, NAME RC_NAV, STATIC, LINK IOCARD_SW, DEVICE 7, INPUT 34
VAR 7118, NAME RC_VOR, STATIC, LINK IOCARD_SW, DEVICE 7, INPUT 35
VAR 7119, NAME RC_ILS, STATIC, LINK IOCARD_SW, DEVICE 7, INPUT 36
VAR 7120, NAME RC_ADF, STATIC, LINK IOCARD_SW, DEVICE 7, INPUT 37
VAR 7121, NAME RC_BFO, STATIC, LINK IOCARD_SW, DEVICE 7, INPUT 38
VAR 7122, NAME RC_SWITCH, STATIC, LINK IOCARD_SW, DEVICE 7, INPUT 39
```

```
VAR 7123, name RC_ENC_DW, STATIC, LINK IOCARD_ENCODER, DEVICE 7, Input 29, Aceleration 3, Type
2
VAR 7124, name RC_ENC_UP, STATIC
VAR 7310, name RC_ENC_DC, STATIC, LINK IOCARD_ENCODER, DEVICE 7, Input 27, Aceleration 3, Type
2
{
&RC_ENC_UP = &RC_ENC_DC * -0.5
}
VAR 7410, name RC_ENC_DC2, STATIC, LINK IOCARD_ENCODER, DEVICE 7, Input 28, Aceleration 3,
Type 2
{
&RC_ENC_UP = &RC_ENC_DC * -0.5
}
```

//RADIO OUTPUTS

```

VAR 7125, NAME RC_ACTIVE_1, STATIC, LINK IOCARD_DISPLAY, Device 7, Digit 0, Numbers 6
{
  IF &RC_ACTIVE_1 = -1
  {
    &RC_ACTIVE_1 = -999999
    &RC_DOT1 = 0
    &RC_DOT2 = 0
  }
  ELSE
  {
    IF &RC_ACTIVE_1 > 999999
    {
      &RC_DOT2 = 0
      &RC_DOT1 = 1
    }
    ELSE
    {
      &RC_DOT2 = 1
      IF &RC_ACTIVE_1 > 0
      {
        &RC_DOT1 = 0
      }
    }
  }
}

VAR 7131, NAME CR_ACTIVE_1, STATIC, LINK IOCARD_DISPLAY, Device 7, Digit 6, Numbers 6
{
  IF &CR_ACTIVE_1 = -1
  {
    &CR_ACTIVE_1 = -999999
    &RC_DOT1 = 0
    &RC_DOT2 = 0
  }
  ELSE
  {
    IF &CR_ACTIVE_1 > 999999
    {
      &RC_DOT2 = 1
      &RC_DOT1 = 0
    }
    ELSE
    {
      &RC_DOT2 = 1
      IF &CR_ACTIVE_1 > 0
      {
        &RC_DOT1 = 0
      }
    }
  }
}

VAR 7137, NAME RC_VHF1_L, STATIC, LINK IOCARD_OUT, DEVICE 7, OUTPUT 11
VAR 7138, NAME RC_VHF2_L, STATIC, LINK IOCARD_OUT, DEVICE 7, OUTPUT 12
VAR 7139, NAME RC_SEL, STATIC, LINK IOCARD_OUT, DEVICE 7, OUTPUT 13
VAR 7140, NAME RC_NAV_L, STATIC, LINK IOCARD_OUT, DEVICE 7, OUTPUT 14
VAR 7141, NAME RC_VOR_L, STATIC, LINK IOCARD_OUT, DEVICE 7, OUTPUT 15
VAR 7142, NAME RC_ILS_L, STATIC, LINK IOCARD_OUT, DEVICE 7, OUTPUT 16
VAR 7143, NAME RC_ADF_L, STATIC, LINK IOCARD_OUT, DEVICE 7, OUTPUT 17
VAR 7144, NAME RC_BFO_L, STATIC, LINK IOCARD_OUT, DEVICE 7, OUTPUT 18
VAR 7304, NAME RC_DOT1, STATIC, LINK IOCARD_OUT, DEVICE 7, OUTPUT 19
VAR 7305, NAME RC_DOT2, STATIC, LINK IOCARD_OUT, DEVICE 7, OUTPUT 20

```

```
//PEDESTAL SIDE R
```

```
//RADIO INPUTS
```

```

VAR 7176, NAME RO_CHANGE, STATIC, LINK IOCARD_SW, DEVICE 7, INPUT 103
VAR 7145, NAME RO_VHF1, STATIC, LINK IOCARD_SW, DEVICE 7, INPUT 104
VAR 7146, NAME RO_VHF2, STATIC, LINK IOCARD_SW, DEVICE 7, INPUT 105
VAR 7147, NAME RO_NAV, STATIC, LINK IOCARD_SW, DEVICE 7, INPUT 106
VAR 7148, NAME RO_VOR, STATIC, LINK IOCARD_SW, DEVICE 7, INPUT 107
VAR 7149, NAME RO_ILS, STATIC, LINK IOCARD_SW, DEVICE 7, INPUT 108
VAR 7150, NAME RO_ADF, STATIC, LINK IOCARD_SW, DEVICE 7, INPUT 109

```

```

VAR 7151, NAME RO_BFO, STATIC, LINK IOCARD_SW, DEVICE 7, INPUT 110
VAR 7152, NAME RO_SWITCH, STATIC, LINK IOCARD_SW, DEVICE 7, INPUT 111

VAR 7153, name RO_ENC_DW, STATIC, LINK IOCARD_ENCODER, DEVICE 7, Input 101, Aceleration 3,
Type 2
VAR 7154, name RO_ENC_UP, STATIC
VAR 7314, name RO_ENC_DC, STATIC, LINK IOCARD_ENCODER, DEVICE 7, Input 99, Aceleration 3, Type
2
{
&RO_ENC_UP = &RO_ENC_DC * -1
}
//RADIO OUTPUTS

VAR 7155, NAME RO_ACTIVE_1, STATIC, LINK IOCARD_DISPLAY, Device 7, Digit 64, Numbers 6
{
IF &RO_ACTIVE_1 = -1
{
&RO_ACTIVE_1 = -999999
&RC_DOT11 = 0
&RC_DOT21 = 0
}
ELSE
{
IF &RO_ACTIVE_1 > 999999
{
&RC_DOT21 = 0
&RC_DOT11 = 1
}
ELSE
{
&RC_DOT21 = 1
IF &RO_ACTIVE_1 > 0
{
&RC_DOT11 = 0
}
}
}
}
VAR 7161, NAME RO_CRS_1, STATIC, LINK IOCARD_DISPLAY, Device 7, Digit 70, Numbers 6
{
IF &RO_CRS_1 = -1
{
&RO_CRS_1 = -999999
&RC_DOT11 = 0
&RC_DOT21 = 0
}
ELSE
{
IF &RO_CRS_1 > 999999
{
&RC_DOT21 = 1
&RC_DOT11 = 0
}
ELSE
{
&RC_DOT21 = 1
IF &RO_CRS_1 > 0
{
&RC_DOT11 = 0
}
}
}
}
}
VAR 7167, NAME RO_VHF1_L, STATIC, LINK IOCARD_OUT, DEVICE 7, OUTPUT 75
VAR 7168, NAME RO_VHF2_L, STATIC, LINK IOCARD_OUT, DEVICE 7, OUTPUT 76
VAR 7169, NAME RO_SEL, STATIC, LINK IOCARD_OUT, DEVICE 7, OUTPUT 77
VAR 7170, NAME RO_NAV_L, STATIC, LINK IOCARD_OUT, DEVICE 7, OUTPUT 78
VAR 7171, NAME RO_VOR_L, STATIC, LINK IOCARD_OUT, DEVICE 7, OUTPUT 79
VAR 7172, NAME RO_ILS_L, STATIC, LINK IOCARD_OUT, DEVICE 7, OUTPUT 80
VAR 7173, NAME RO_ADF_L, STATIC, LINK IOCARD_OUT, DEVICE 7, OUTPUT 81
VAR 7174, NAME RO_BFO_L, STATIC, LINK IOCARD_OUT, DEVICE 7, OUTPUT 82
VAR 7306, NAME RC_DOT11, STATIC, LINK IOCARD_OUT, DEVICE 7, OUTPUT 83
VAR 7307, NAME RC_DOT21, STATIC, LINK IOCARD_OUT, DEVICE 7, OUTPUT 84

```



//RUDDER & PB INPUTS

```
VAR 7177, NAME RT_RESET, STATIC, LINK IOCARD_SW, DEVICE 7, INPUT 139
VAR 7178, NAME RT_NOSEL, STATIC, LINK IOCARD_SW, DEVICE 7, INPUT 141
VAR 7179, NAME RT_NOSER, STATIC, LINK IOCARD_SW, DEVICE 7, INPUT 142
VAR 7180, NAME PB_PB, STATIC, LINK IOCARD_SW, DEVICE 7, INPUT 140
```

//RUDDER & PB OUTPUTS

```
VAR 7181, NAME RT_DISPLAY_1, STATIC, LINK IOCARD_DISPLAY, Device 7, Digit 84, Numbers 3
VAR 7184, NAME RT_DISPLAY_4, STATIC, LINK IOCARD_DISPLAY, Device 7, Digit 87, Numbers 1
VAR 7300, NAME RT_STATUS, STATIC, VALUE 0
```

```
{
CALL &SETRUD
}
VAR 7301, NAME RT_VALUE, STATIC
{
CALL &SETRUD
}
VAR 7302, NAME SETRUD, STATIC, LINK SUBROUTINE
{
IF &RT_STATUS = 0
{
&RT_DISPLAY_1 = -999999
&RT_DISPLAY_4 = -999999
}
ELSE
{
IF &RT_VALUE > 0
{
&RT_DISPLAY_4 = -999995
&RT_DISPLAY_1 = &RT_VALUE * 10
}
ELSE
{
&RT_DISPLAY_4 = -999997
&RT_DISPLAY_1 = &RT_VALUE * (-10)
}
}
}
}
```

//AUDIO INPUTS

```
VAR 7185, NAME FO_AP_TB1, STATIC, LINK IOCARD_SW, DEVICE 7, INPUT 72
VAR 7186, NAME FO_AP_TB2, STATIC, LINK IOCARD_SW, DEVICE 7, INPUT 73
VAR 7187, NAME FO_AP_TB3, STATIC, LINK IOCARD_SW, DEVICE 7, INPUT 74
VAR 7188, NAME FO_AP_TB4, STATIC, LINK IOCARD_SW, DEVICE 7, INPUT 75
VAR 7189, NAME FO_AP_TB5, STATIC, LINK IOCARD_SW, DEVICE 7, INPUT 76
VAR 7190, NAME FO_AP_TB6, STATIC, LINK IOCARD_SW, DEVICE 7, INPUT 77
VAR 7191, NAME FO_AP_TB7, STATIC, LINK IOCARD_SW, DEVICE 7, INPUT 78
```

```
VAR 7192, NAME FO_AP_RK1, STATIC, LINK IOCARD_SW, DEVICE 7, INPUT 82
VAR 7193, NAME FO_AP_RK2, STATIC, LINK IOCARD_SW, DEVICE 7, INPUT 83
VAR 7194, NAME FO_AP_RK3, STATIC, LINK IOCARD_SW, DEVICE 7, INPUT 84
VAR 7195, NAME FO_AP_RK4, STATIC, LINK IOCARD_SW, DEVICE 7, INPUT 85
VAR 7196, NAME FO_AP_RK5, STATIC, LINK IOCARD_SW, DEVICE 7, INPUT 86
VAR 7197, NAME FO_AP_RK6, STATIC, LINK IOCARD_SW, DEVICE 7, INPUT 87
VAR 7198, NAME FO_AP_RK7, STATIC, LINK IOCARD_SW, DEVICE 7, INPUT 88
VAR 7199, NAME FO_AP_INT, STATIC, LINK IOCARD_SW, DEVICE 7, INPUT 97
VAR 7200, NAME FO_AP_RAD, STATIC, LINK IOCARD_SW, DEVICE 7, INPUT 98
VAR 7201, NAME FO_AP_ONCE, STATIC, LINK IOCARD_SW, DEVICE 7, INPUT 79
VAR 7202, NAME FO_AP_RESET, STATIC, LINK IOCARD_SW, DEVICE 7, INPUT 81
VAR 7203, NAME FO_AP_RK8, STATIC, LINK IOCARD_SW, DEVICE 7, INPUT 89
VAR 7204, NAME FO_AP_PA, STATIC, LINK IOCARD_SW, DEVICE 7, INPUT 80
```

```
VAR 7205, NAME FO_AP_RK9, STATIC, LINK IOCARD_SW, DEVICE 7, INPUT 90
VAR 7206, NAME FO_AP_RK10, STATIC, LINK IOCARD_SW, DEVICE 7, INPUT 91
VAR 7207, NAME FO_AP_RK11, STATIC, LINK IOCARD_SW, DEVICE 7, INPUT 92
VAR 7208, NAME FO_AP_RK12, STATIC, LINK IOCARD_SW, DEVICE 7, INPUT 93
VAR 7209, NAME FO_AP_RK13, STATIC, LINK IOCARD_SW, DEVICE 7, INPUT 94
VAR 7210, NAME FO_AP_RK14, STATIC, LINK IOCARD_SW, DEVICE 7, INPUT 95
VAR 7211, NAME FO_AP_RK15, STATIC, LINK IOCARD_SW, DEVICE 7, INPUT 96
```

//AUDIO OUTPUTS

VAR 7212, NAME FO\_AP\_TB1\_UP, STATIC, LINK IOCARD\_OUT, Device 7, OUTPUT 87  
VAR 7213, NAME FO\_AP\_TB1\_DW, STATIC, LINK IOCARD\_OUT, Device 7, OUTPUT 96  
VAR 7214, NAME FO\_AP\_TB2\_UP, STATIC, LINK IOCARD\_OUT, Device 7, OUTPUT 88  
VAR 7215, NAME FO\_AP\_TB2\_DW, STATIC, LINK IOCARD\_OUT, Device 7, OUTPUT 97  
VAR 7216, NAME FO\_AP\_TB3\_UP, STATIC, LINK IOCARD\_OUT, Device 7, OUTPUT 89  
VAR 7217, NAME FO\_AP\_TB3\_DW, STATIC, LINK IOCARD\_OUT, Device 7, OUTPUT 98  
VAR 7218, NAME FO\_AP\_TB4\_UP, STATIC, LINK IOCARD\_OUT, Device 7, OUTPUT 90  
VAR 7219, NAME FO\_AP\_TB4\_DW, STATIC, LINK IOCARD\_OUT, Device 7, OUTPUT 99  
VAR 7220, NAME FO\_AP\_TB5\_UP, STATIC, LINK IOCARD\_OUT, Device 7, OUTPUT 91  
VAR 7221, NAME FO\_AP\_TB5\_DW, STATIC, LINK IOCARD\_OUT, Device 7, OUTPUT 100  
VAR 7222, NAME FO\_AP\_TB6\_UP, STATIC, LINK IOCARD\_OUT, Device 7, OUTPUT 92  
VAR 7223, NAME FO\_AP\_TB6\_DW, STATIC, LINK IOCARD\_OUT, Device 7, OUTPUT 101  
VAR 7224, NAME FO\_AP\_TB7\_UP, STATIC, LINK IOCARD\_OUT, Device 7, OUTPUT 93  
VAR 7225, NAME FO\_AP\_TB7\_DW, STATIC, LINK IOCARD\_OUT, Device 7, OUTPUT 102

VAR 7226, NAME FO\_AP\_RK1\_L, STATIC, LINK IOCARD\_OUT, Device 7, OUTPUT 103  
VAR 7227, NAME FO\_AP\_RK2\_L, STATIC, LINK IOCARD\_OUT, Device 7, OUTPUT 104  
VAR 7228, NAME FO\_AP\_RK3\_L, STATIC, LINK IOCARD\_OUT, Device 7, OUTPUT 105  
VAR 7229, NAME FO\_AP\_RK4\_L, STATIC, LINK IOCARD\_OUT, Device 7, OUTPUT 106  
VAR 7230, NAME FO\_AP\_RK5\_L, STATIC, LINK IOCARD\_OUT, Device 7, OUTPUT 107  
VAR 7231, NAME FO\_AP\_RK6\_L, STATIC, LINK IOCARD\_OUT, Device 7, OUTPUT 108  
VAR 7232, NAME FO\_AP\_RK7\_L, STATIC, LINK IOCARD\_OUT, Device 7, OUTPUT 109

VAR 7233, NAME FO\_AP\_ONCE\_L, STATIC, LINK IOCARD\_OUT, Device 7, OUTPUT 94  
VAR 7234, NAME FO\_AP\_PA\_L, STATIC, LINK IOCARD\_OUT, Device 7, OUTPUT 110  
VAR 7235, NAME FO\_AP\_RK8\_L, STATIC, LINK IOCARD\_OUT, Device 7, OUTPUT 95

VAR 7236, NAME FO\_AP\_RK9\_L, STATIC, LINK IOCARD\_OUT, Device 7, OUTPUT 111  
VAR 7237, NAME FO\_AP\_RK10\_L, STATIC, LINK IOCARD\_OUT, Device 7, OUTPUT 112  
VAR 7238, NAME FO\_AP\_RK11\_L, STATIC, LINK IOCARD\_OUT, Device 7, OUTPUT 113  
VAR 7239, NAME FO\_AP\_RK12\_L, STATIC, LINK IOCARD\_OUT, Device 7, OUTPUT 114  
VAR 7240, NAME FO\_AP\_RK13\_L, STATIC, LINK IOCARD\_OUT, Device 7, OUTPUT 115  
VAR 7241, NAME FO\_AP\_RK14\_L, STATIC, LINK IOCARD\_OUT, Device 7, OUTPUT 116  
VAR 7242, NAME FO\_AP\_RK15\_L, STATIC, LINK IOCARD\_OUT, Device 7, OUTPUT 117

//ATC INPUTS

VAR 7243, NAME ATC\_ROT1\_1, STATIC, LINK IOCARD\_SW, DEVICE 7, INPUT 137  
VAR 7244, NAME ATC\_ROT1\_2, STATIC, LINK IOCARD\_SW, DEVICE 7, INPUT 136  
VAR 7245, NAME ATC\_ROT1\_3, STATIC, LINK IOCARD\_SW, DEVICE 7, INPUT 135  
VAR 7246, NAME ATC\_ROT2\_1, STATIC, LINK IOCARD\_SW, DEVICE 7, INPUT 134  
VAR 7247, NAME ATC\_ROT3\_1, STATIC, LINK IOCARD\_SW, DEVICE 7, INPUT 138  
VAR 7248, NAME ATC\_ROT4\_1, STATIC, LINK IOCARD\_SW, DEVICE 7, INPUT 130  
VAR 7249, NAME ATC\_ROT4\_2, STATIC, LINK IOCARD\_SW, DEVICE 7, INPUT 131  
VAR 7250, NAME ATC\_ROT4\_3, STATIC, LINK IOCARD\_SW, DEVICE 7, INPUT 132  
VAR 7251, NAME ATC\_ROT4\_4, STATIC, LINK IOCARD\_SW, DEVICE 7, INPUT 133  
VAR 7252, NAME ATC\_ROT5\_1, STATIC, LINK IOCARD\_SW, DEVICE 7, INPUT 129  
VAR 7253, NAME ATC\_ROT5\_2, STATIC, LINK IOCARD\_SW, DEVICE 7, INPUT 128  
VAR 7254, NAME ATC\_ROT5\_3, STATIC, LINK IOCARD\_SW, DEVICE 7, INPUT 127

VAR 7255, NAME ATC\_IDENT, STATIC, LINK IOCARD\_SW, DEVICE 7, INPUT 125  
VAR 7256, NAME ATC\_KB1, STATIC, LINK IOCARD\_SW, DEVICE 7, INPUT 118  
VAR 7257, NAME ATC\_KB2, STATIC, LINK IOCARD\_SW, DEVICE 7, INPUT 119  
VAR 7258, NAME ATC\_KB3, STATIC, LINK IOCARD\_SW, DEVICE 7, INPUT 120  
VAR 7259, NAME ATC\_KB4, STATIC, LINK IOCARD\_SW, DEVICE 7, INPUT 121  
VAR 7260, NAME ATC\_KB5, STATIC, LINK IOCARD\_SW, DEVICE 7, INPUT 122  
VAR 7261, NAME ATC\_KB6, STATIC, LINK IOCARD\_SW, DEVICE 7, INPUT 123  
VAR 7262, NAME ATC\_KB7, STATIC, LINK IOCARD\_SW, DEVICE 7, INPUT 124  
VAR 7263, NAME ATC\_KB8, STATIC, LINK IOCARD\_SW, DEVICE 7, INPUT 125  
VAR 7264, NAME ATC\_KB9, STATIC, LINK IOCARD\_SW, DEVICE 7, INPUT 126

//ATC OUTPUTS

VAR 7265, NAME ATC\_FAIL, STATIC, LINK IOCARD\_OUT, Device 7, OUTPUT 85  
VAR 7266, NAME ATC\_DIGIT\_1, STATIC, LINK IOCARD\_DISPLAY, Device 7, Digit 80, Numbers 4  
{  
IF &ATC\_DIGIT\_1 = -1  
{  
&ATC\_DIGIT\_1 = -999999  
}  
}

//MASTER CARD 3

//FLOOD INPUTS

VAR 7270, NAME FLOOD\_AIDS, STATIC, LINK IOCARD\_SW, DEVICE 7, INPUT 157  
VAR 7271, NAME ATC\_DFDR, STATIC, LINK IOCARD\_SW, DEVICE 7, INPUT 158

//RADAR INPUTS

VAR 7272, NAME RD\_SYS\_ON, STATIC, LINK IOCARD\_SW, DEVICE 7, INPUT 144  
VAR 7273, NAME RD\_SYS\_OFF, STATIC, LINK IOCARD\_SW, DEVICE 7, INPUT 145

VAR 7274, NAME RD\_PWS\_OFF, STATIC, LINK IOCARD\_SW, DEVICE 7, INPUT 147  
VAR 7275, NAME RD\_PWS\_AUTO, STATIC, LINK IOCARD\_SW, DEVICE 7, INPUT 146

VAR 7276, NAME RD\_GND\_OFF, STATIC, LINK IOCARD\_SW, DEVICE 7, INPUT 149  
VAR 7277, NAME RD\_GND\_ON, STATIC, LINK IOCARD\_SW, DEVICE 7, INPUT 148

VAR 7278, NAME RD\_WX, STATIC, LINK IOCARD\_SW, DEVICE 7, INPUT 153  
VAR 7279, NAME RD\_WXT, STATIC, LINK IOCARD\_SW, DEVICE 7, INPUT 154  
VAR 7280, NAME RD\_TURB, STATIC, LINK IOCARD\_SW, DEVICE 7, INPUT 155  
VAR 7281, NAME RD\_MAP, STATIC, LINK IOCARD\_SW, DEVICE 7, INPUT 156

```
//-----  
//          MCDU CAP A320 PROSIM SCRIPT CODE          -  
//-----  
//  
//-----  
//-DEVICE NUMBER INFO:                               -  
//-----  
// MCDU -> Device 13  
//-----
```

Var 1350, name CDUKey, STATIC, Link IOCARD\_KEYS, device 13  
// Keyboard reading  
Var 1351, name CDUExec, STATIC, Link IOCARD\_OUT, device 13, Output 2  
// EXEC LED  
Var 1352, name CDUFail, STATIC, Link IOCARD\_OUT, device 13, Output 4  
// FAIL LED  
Var 1353, name CDUMSG, STATIC, Link IOCARD\_OUT, device 13, Output 1  
// MSG LED

```
//-----  
//          MCDU FO A320 PROSIM SCRIPT CODE          -  
//-----  
//  
//-----  
//-DEVICE NUMBER INFO:                               -  
//-----  
// MCDU -> Device 14  
//-----
```

Var 1354, name CDUKeyFO, STATIC, Link IOCARD\_KEYS, device 14  
// Keyboard reading  
Var 1355, name CDUExecFO, STATIC, Link IOCARD\_OUT, device 14, Output 2  
// EXEC LED  
Var 1356, name CDUFailFO, STATIC, Link IOCARD\_OUT, device 14, Output 4  
// FAIL LED  
Var 1357, name CDUMSGFO, STATIC, Link IOCARD\_OUT, device 14, Output 1